



CONTRA COSTA COUNTY
Office of Education

learn • lead • achieve

Contra Costa County Office of Education 2022 Redistricting

What is Redistricting

Definition

Redistricting is the process of adjusting district lines every 10 years after the release of the U.S. Census. The well-known examples are Congress and the legislature.

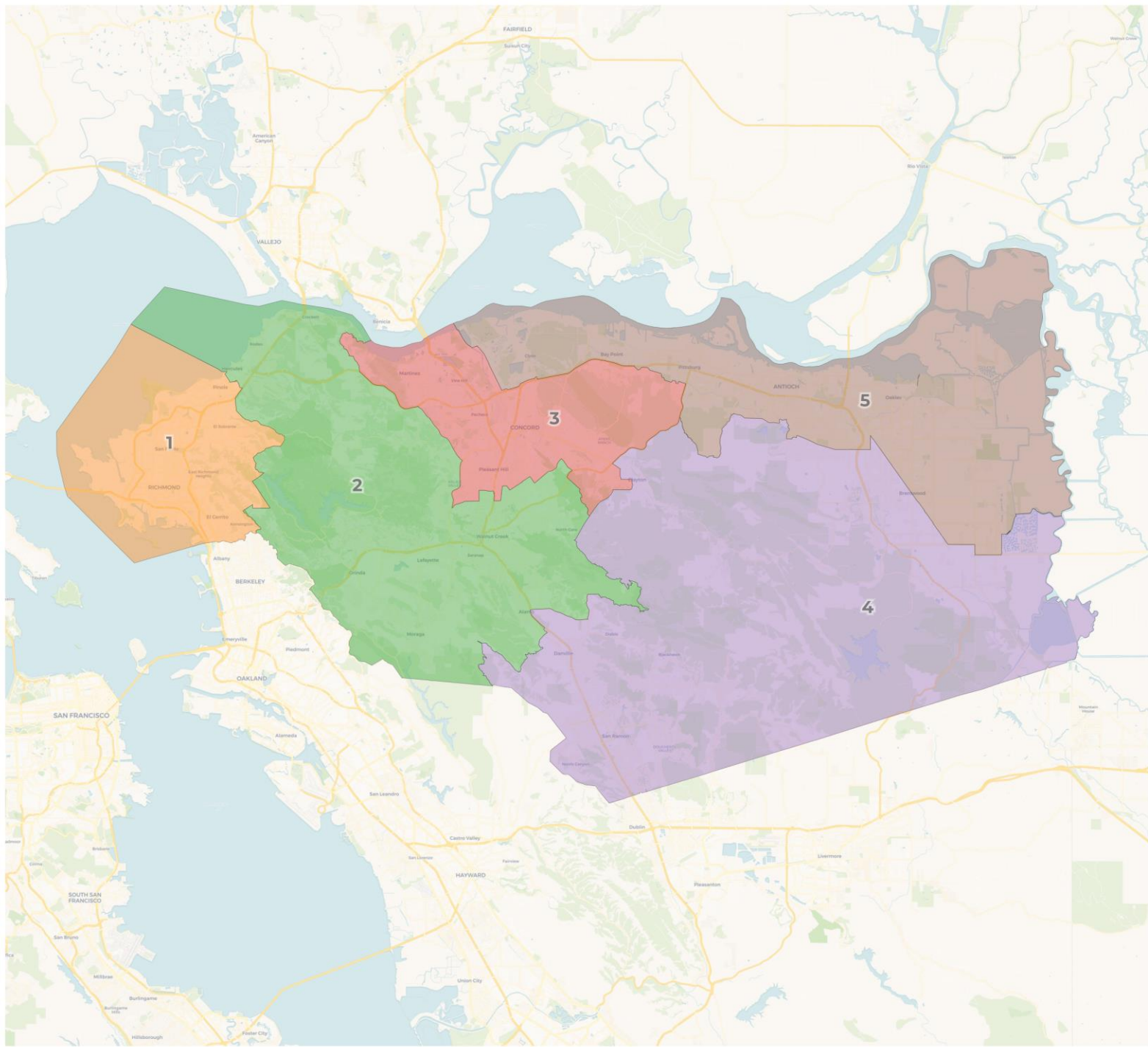
Within the U.S., redistricting has become an extremely politicized process and has been the subject of more high-profile Supreme Court decisions than any other part of our elections system.

Traditional Redistricting Principles

Preventing a Redistricting from Becoming a Gerrymander

There are a number of criteria that have been used nationally and upheld by courts.

- Relatively equal size – people, not citizens
- Contiguous – districts should not hop/jump
- Keep districts compact – appearance/function
- Maintain “communities of interest”
- Follow city/county/local government lines



2020 Census

	1	2	3	4	5
Population	228,947	224,441	223,083	241,506	250,028
Deviation	-4,654	-9,160	-10,518	7,905	16,427
Deviation %	-2.0%	-3.9%	-4.5%	3.4%	7.0%
Other	63,800	145,674	118,991	126,887	83,801
Other %	27.9%	64.9%	53.3%	52.5%	33.5%
Latino	93,284	26,665	59,362	33,049	103,032
Latino %	40.7%	11.9%	26.6%	13.7%	41.2%
Asian	39,083	43,098	35,225	69,604	27,450
Asian %	17.1%	19.2%	15.8%	28.8%	11.0%
Black	32,780	9,004	9,505	11,966	35,745
Black %	14.3%	4.0%	4.3%	5.0%	14.3%

Citizen Voting Age Population (CVAP)

	1	2	3	4	5
Total CVAP	134,618	164,745	153,110	153,236	147,166
Other CVAP	50,827	116,133	101,229	100,104	69,139
Other CVAP %	37.8%	70.5%	66.1%	65.3%	47.0%
Latino CVAP	33,316	15,330	26,502	17,071	40,746
Latino CVAP %	24.7%	9.3%	17.3%	11.1%	27.7%
Asian CVAP	24,735	26,472	18,225	28,180	14,024
Asian CVAP %	18.4%	16.1%	11.9%	18.4%	9.5%
Black CVAP	25,740	6,811	7,154	7,881	23,257
Black CVAP %	19.1%	4.1%	4.7%	5.1%	15.8%

2020 Census

	1	2	3	4	5
Population	228,947	224,441	223,083	241,506	250,028
Deviation	-4,654	-9,160	-10,518	7,905	16,427
Deviation %	-2.0%	-3.9%	-4.5%	3.4%	7.0%
Other	63,800	145,674	118,991	126,887	83,801
Other %	Deviation is 11.5%				33.5%
Latino					103,032
Latino %					41.2%
Asian	39,083	43,098	35,225	69,604	27,450
Asian %	17.1%	19.2%	15.8%	28.8%	11.0%
Black	32,780	9,004	9,505	11,966	35,745
Black %	14.3%	4.0%	4.3%	5.0%	14.3%

Citizen Voting Age Population (CVAP)

	1	2	3	4	5
Total CVAP	134,618	164,745	153,110	153,236	147,166
Other CVAP	50,827	116,133	101,229	100,104	69,139
Other CVAP %	37.8%	70.5%	66.1%	65.3%	47.0%
Latino CVAP	33,316	15,330	26,502	17,071	40,746
Latino CVAP %	24.7%	9.3%	17.3%	11.1%	27.7%
Asian CVAP	24,735	26,472	18,225	28,180	14,024
Asian CVAP %	18.4%	16.1%	11.9%	18.4%	9.5%
Black CVAP	25,740	6,811	7,154	7,881	23,257
Black CVAP %	19.1%	4.1%	4.7%	5.1%	15.8%

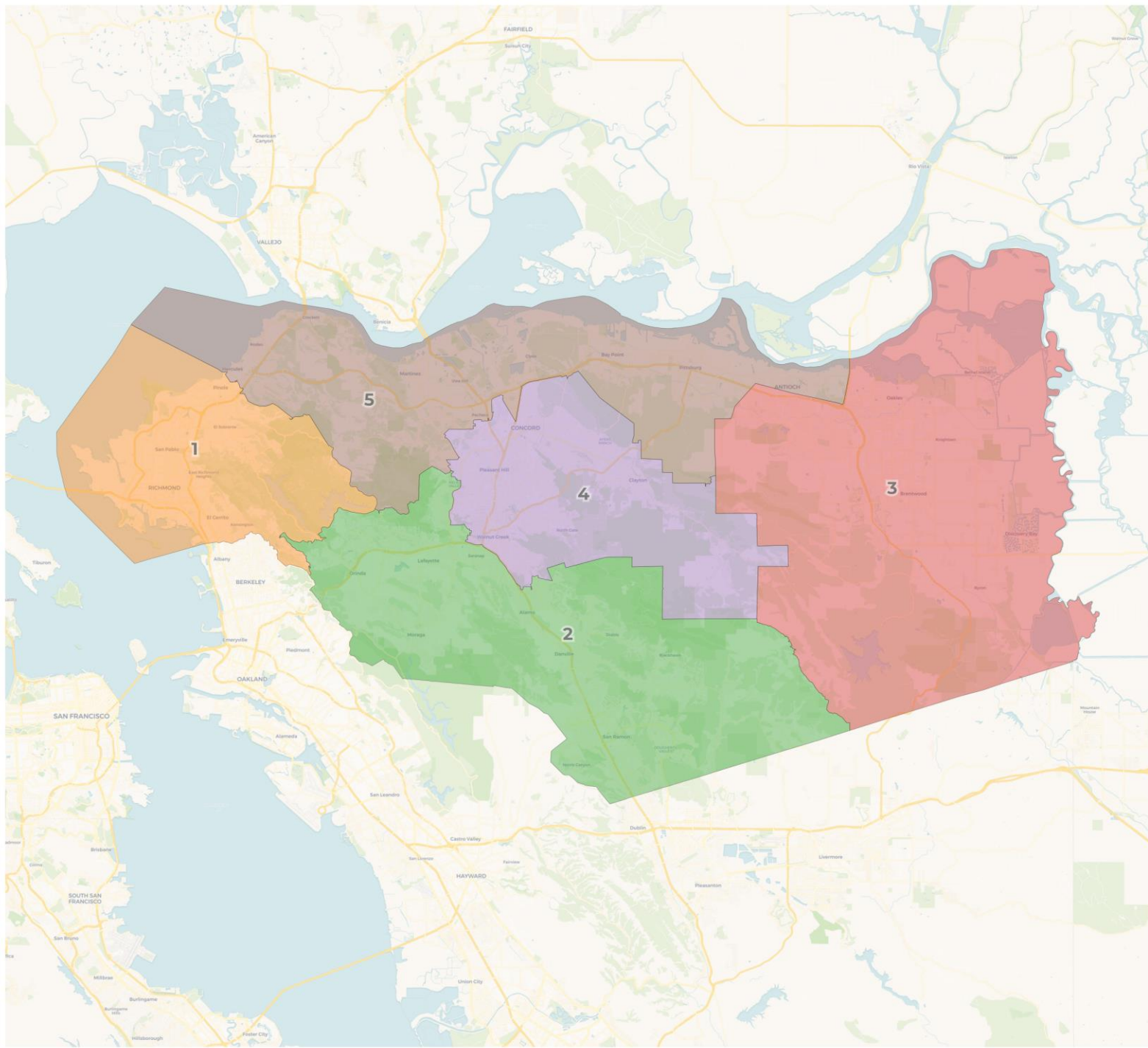


2020 Census

	Ward 1	Ward 2	Ward 3	Ward 4	Ward 5
Population	233,911	233,827	233,282	231,302	235,747
Deviation	297	213	-332	-2,312	2,133
Deviation %	0.1%	0.1%	-0.1%	-1.0%	0.9%
Other	64,907	155,242	122,757	121,998	74,193
Other %	27.7%	66.4%	52.6%	52.7%	31.5%
Latino	94,042	27,915	63,044	33,481	96,943
Latino %	40.2%	11.9%	27.0%	14.5%	41.1%
Asian	41,428	42,091	34,976	67,005	29,048
Asian %	17.7%	18.0%	15.0%	29.0%	12.3%
Black	33,534	8,579	12,505	8,818	35,563
Black %	14.3%	3.7%	5.4%	3.8%	15.1%

Citizen Voting Age Population (CVAP)

	Ward 1	Ward 2	Ward 3	Ward 4	Ward 5
Total CVAP	138,969	175,253	162,430	145,905	140,387
Other CVAP	50,405	126,320	103,750	95,323	60,147
Other CVAP %	36.3%	72.1%	63.9%	65.3%	42.8%
Latino CVAP	34,571	16,202	30,065	16,249	40,629
Latino CVAP %	24.9%	9.2%	18.5%	11.1%	28.9%
Asian CVAP	26,442	25,983	19,403	27,820	15,951
Asian CVAP %	19.0%	14.8%	11.9%	19.1%	11.4%
Black CVAP	27,551	6,748	9,212	6,513	23,660
Black CVAP %	19.8%	3.9%	5.7%	4.5%	16.9%



2020 Census

	1	2	3	4	5
Population	236,069	245,721	222,093	242,336	221,850
Deviation	2,455	12,107	-11,521	8,722	-11,764
Deviation %	1.1%	5.2%	-4.9%	3.7%	-5.0%
Other	66,985	150,446	98,289	146,490	76,887
Other %	28.4%	61.2%	44.3%	60.4%	34.7%
Latino	95,017	19,875	69,555	51,693	79,285
Latino %	40.2%	8.1%	31.3%	21.3%	35.7%
Asian	40,760	71,510	26,345	36,915	39,018
Asian %	17.3%	29.1%	11.9%	15.2%	17.6%
Black	33,307	3,890	27,904	7,238	26,660
Black %	14.1%	1.6%	12.6%	3.0%	12.0%

Citizen Voting Age Population (CVAP)

	1	2	3	4	5
Total CVAP	140,958	161,581	146,911	171,479	142,015
Other CVAP	52,492	117,893	79,077	121,079	65,404
Other CVAP %	37.2%	73.0%	53.8%	70.6%	46.1%
Latino CVAP	35,145	9,987	33,436	24,253	34,895
Latino CVAP %	24.9%	6.2%	22.8%	14.1%	24.6%
Asian CVAP	26,038	31,106	14,262	20,817	23,376
Asian CVAP %	18.5%	19.3%	9.7%	12.1%	16.5%
Black CVAP	27,283	2,595	20,136	5,330	18,340
Black CVAP %	19.4%	1.6%	13.7%	3.1%	12.9%

Draft Map Plans

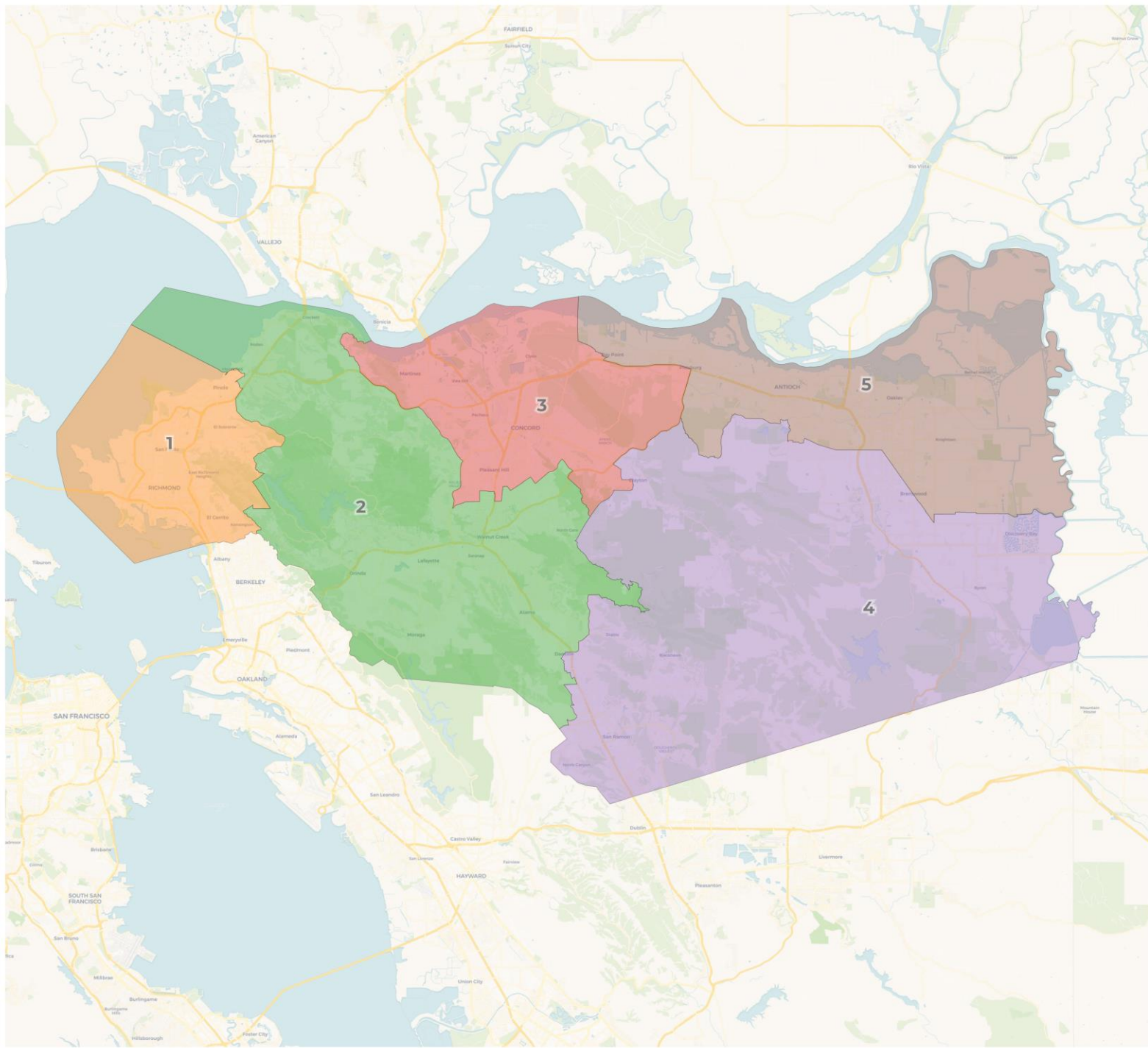
Each draft plan is provided with both a PDF and Online Web-based format

- **Draft Map A – Minimum change**
- **Draft Map B – Drawn from scratch using USDs and cities when possible, favoring compact shapes.**
- **Draft Map C - Drawn from scratch using USDs and Elementary school district.**

Draft Map Plans

Each draft plan is provided with both a PDF and Online Web-based format

- **Draft Map A – Minimum change**



2020 Census

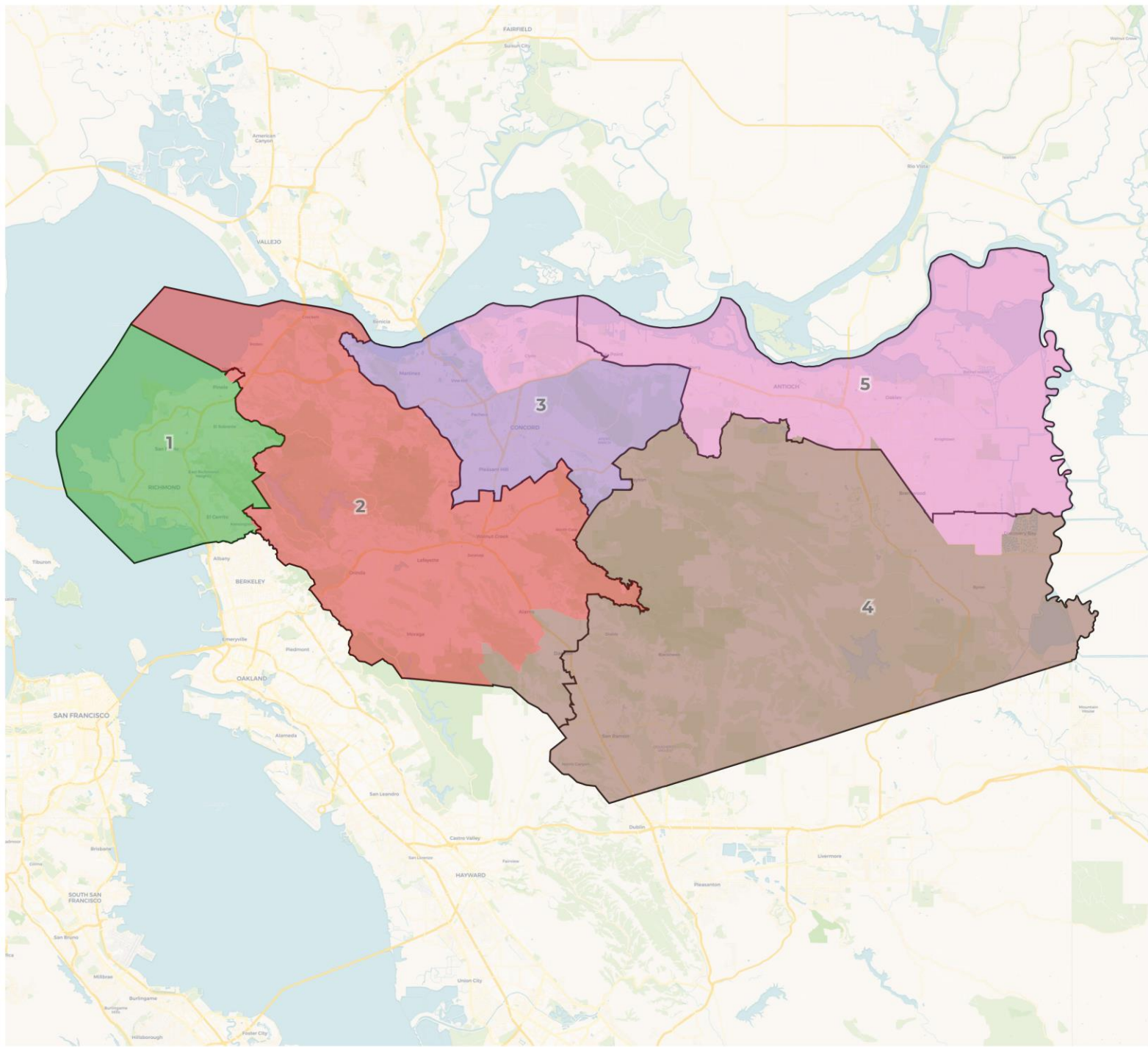
	1	2	3	4	5
Population	231,678	232,129	235,048	234,798	234,416
Deviation	-1,936	-1,485	1,434	1,184	802
Deviation %	-0.8%	-0.6%	0.6%	0.5%	0.3%
Other	64,442	153,471	121,857	121,108	78,219
Other %	27.8%	66.1%	51.8%	51.6%	33.4%
Latino	93,730	27,047	65,407	33,150	96,091
Latino %	40.5%	11.7%	27.8%	14.1%	41.0%
Asian	40,304	42,943	37,059	68,743	25,499
Asian %	17.4%	18.5%	15.8%	29.3%	10.9%
Black	33,202	8,668	10,725	11,797	34,607
Black %	14.3%	3.7%	4.6%	5.0%	14.8%

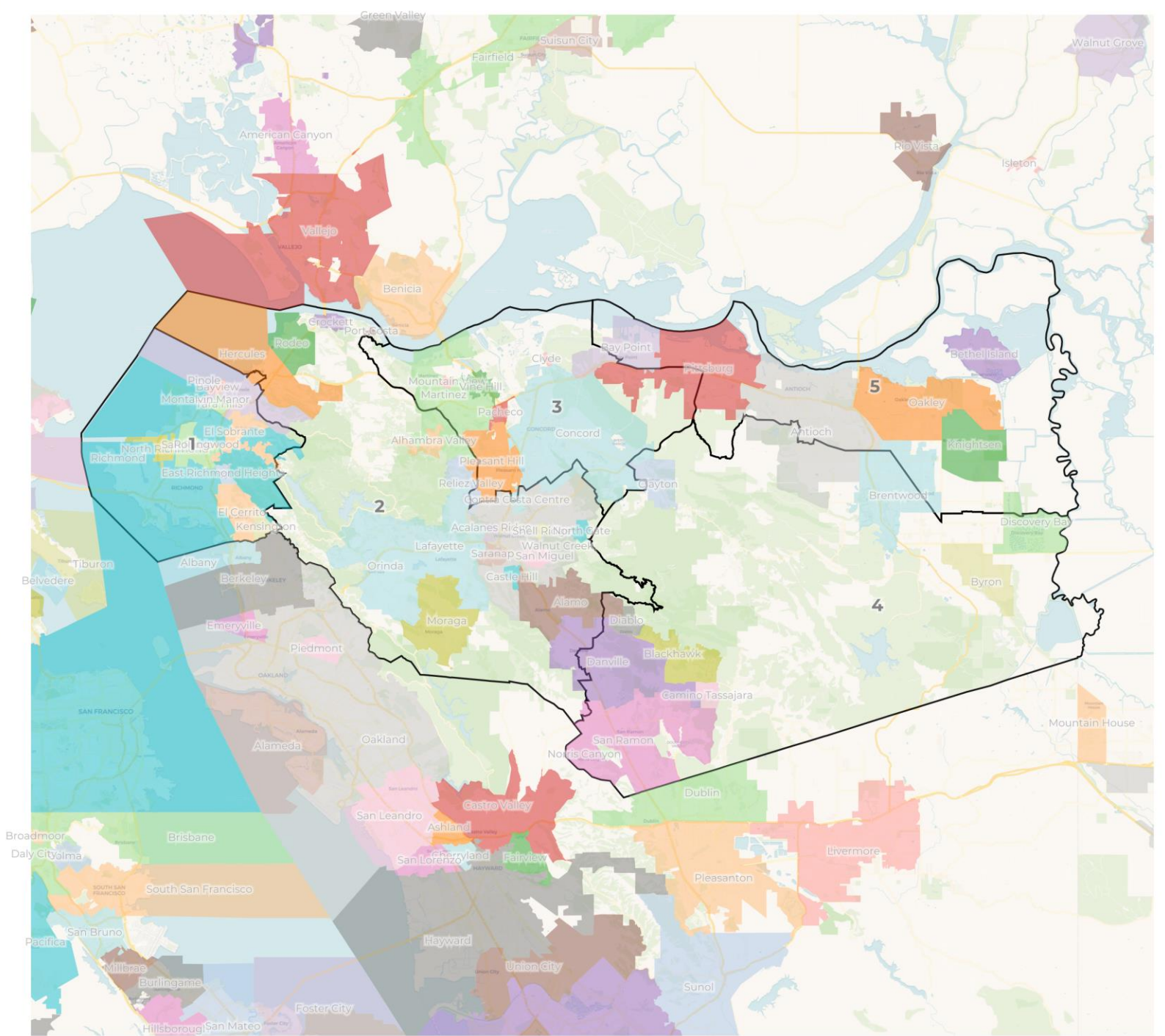
Citizen Voting Age Population (CVAP)

	1	2	3	4	5
Total CVAP	137,518	173,014	160,675	151,223	140,514
Other CVAP	50,115	123,526	102,760	95,941	63,603
Other CVAP %	36.4%	71.4%	64.0%	63.4%	45.3%
Latino CVAP	34,473	15,535	30,398	17,694	39,616
Latino CVAP %	25.1%	9.0%	18.9%	11.7%	28.2%
Asian CVAP	25,653	27,094	19,842	28,811	14,199
Asian CVAP %	18.7%	15.7%	12.3%	19.1%	10.1%
Black CVAP	27,277	6,859	7,675	8,777	23,096
Black CVAP %	19.8%	4.0%	4.8%	5.8%	16.4%

Contra Costa COE

Plan A current lines overlay

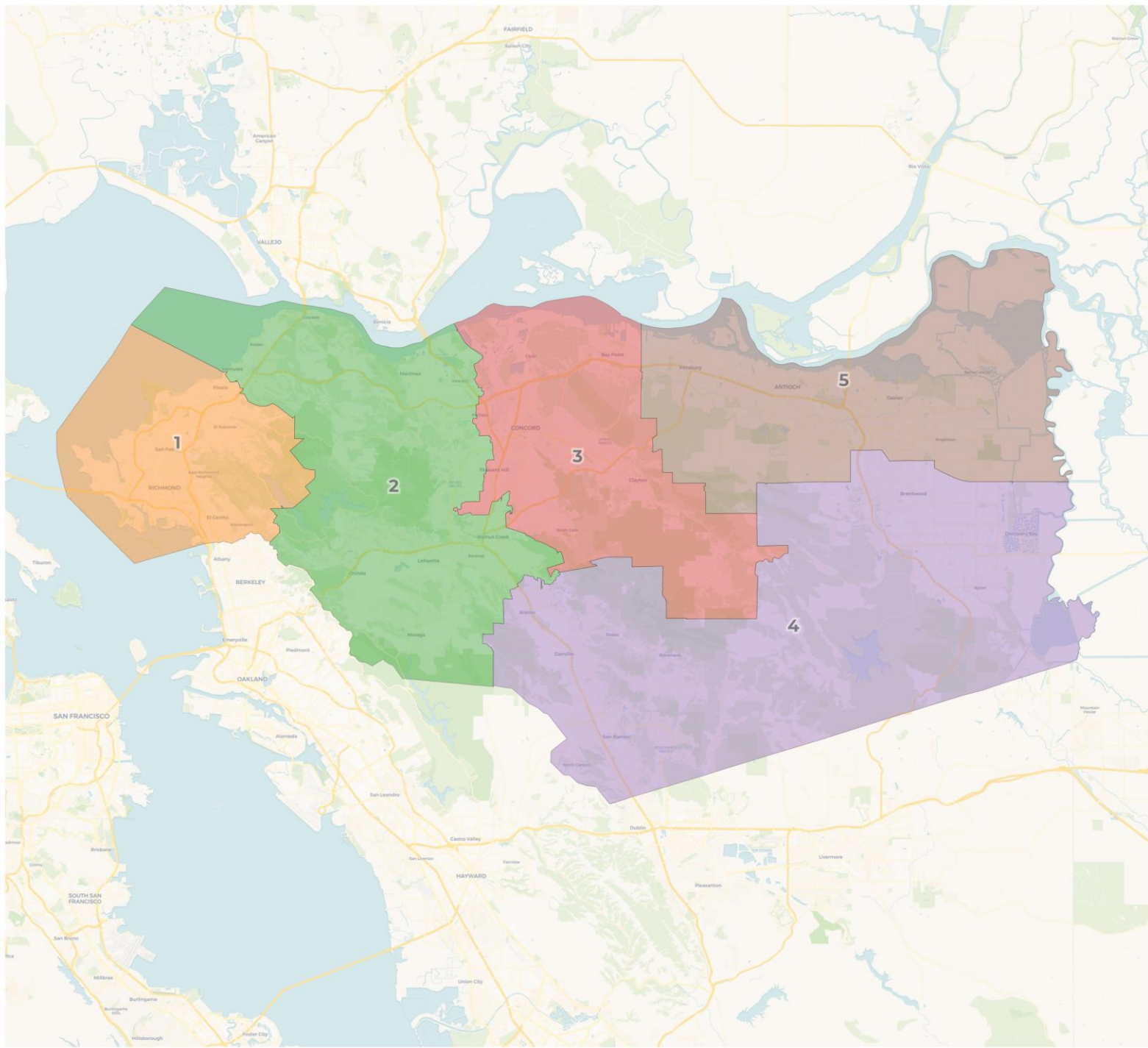




Draft Map Plans

Each draft plan is provided with both a PDF and Online Web-based format

- **Draft Map B – Drawn from scratch using USDs and cities when possible, favoring compact shapes.**

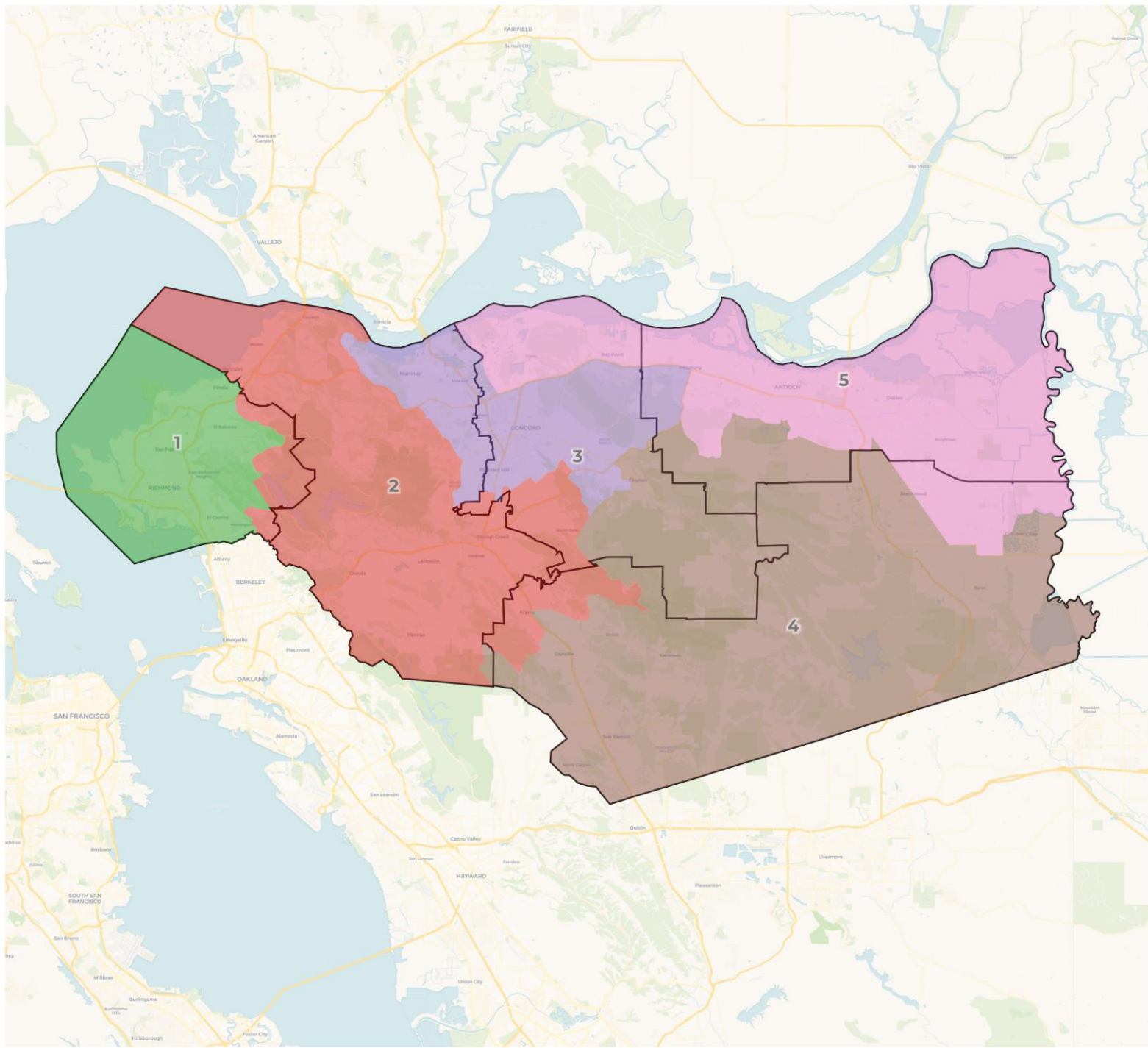


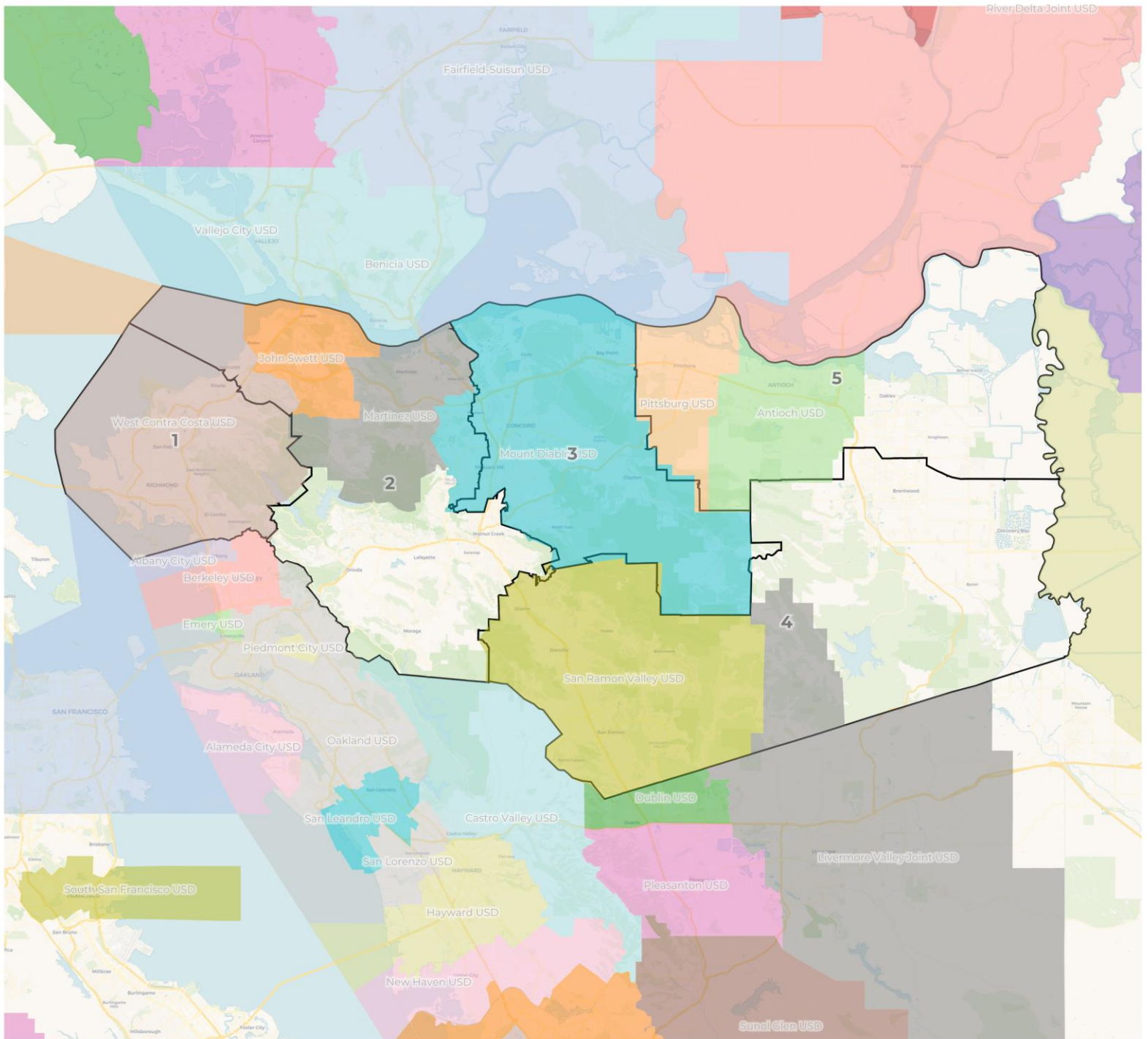
2020 Census

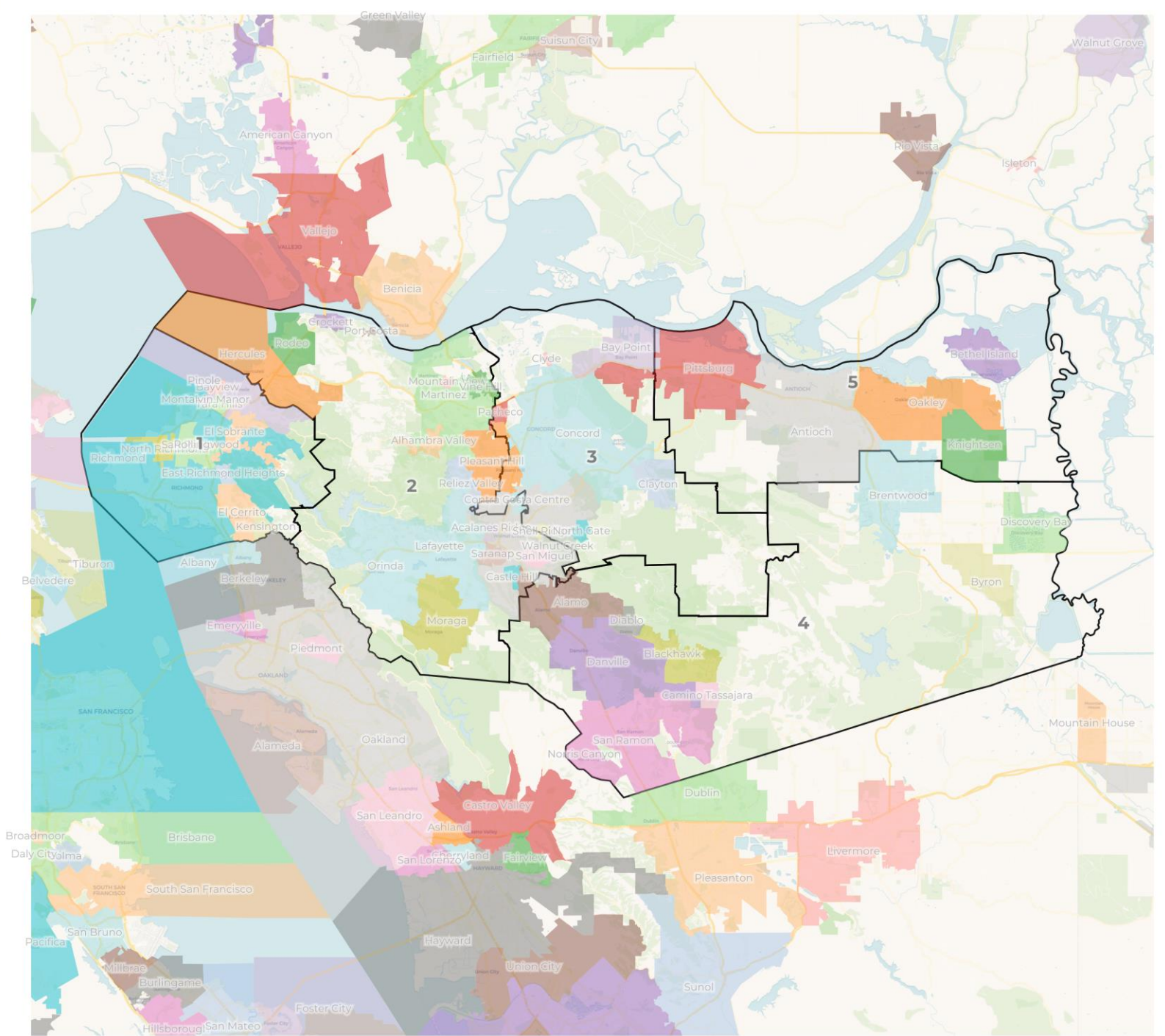
	1	2	3	4	5
Population	236,010	228,613	228,329	238,985	236,132
Deviation	2,396	-5,001	-5,285	5,371	2,518
Deviation %	1.0%	-2.1%	-2.3%	2.3%	1.1%
Other	66,940	148,271	115,707	131,428	76,751
Other %	28.4%	64.9%	50.7%	55.0%	32.5%
Latino	95,003	30,600	64,877	32,627	92,318
Latino %	40.3%	13.4%	28.4%	13.7%	39.1%
Asian	40,760	40,174	37,761	67,414	28,439
Asian %	17.3%	17.6%	16.5%	28.2%	12.0%
Black	33,307	9,568	9,984	7,516	38,624
Black %	14.1%	4.2%	4.4%	3.1%	16.4%

Citizen Voting Age Population (CVAP)

	1	2	3	4	5
Total CVAP	140,908	170,609	154,243	151,746	145,438
Other CVAP	52,449	121,629	96,739	101,779	63,349
Other CVAP %	37.2%	71.3%	62.7%	67.1%	43.6%
Latino CVAP	35,138	17,411	28,645	16,148	40,374
Latino CVAP %	24.9%	10.2%	18.6%	10.6%	27.8%
Asian CVAP	26,038	24,455	21,680	28,299	15,127
Asian CVAP %	18.5%	14.3%	14.1%	18.6%	10.4%
Black CVAP	27,283	7,114	7,179	5,520	26,588
Black CVAP %	19.4%	4.2%	4.7%	3.6%	18.3%



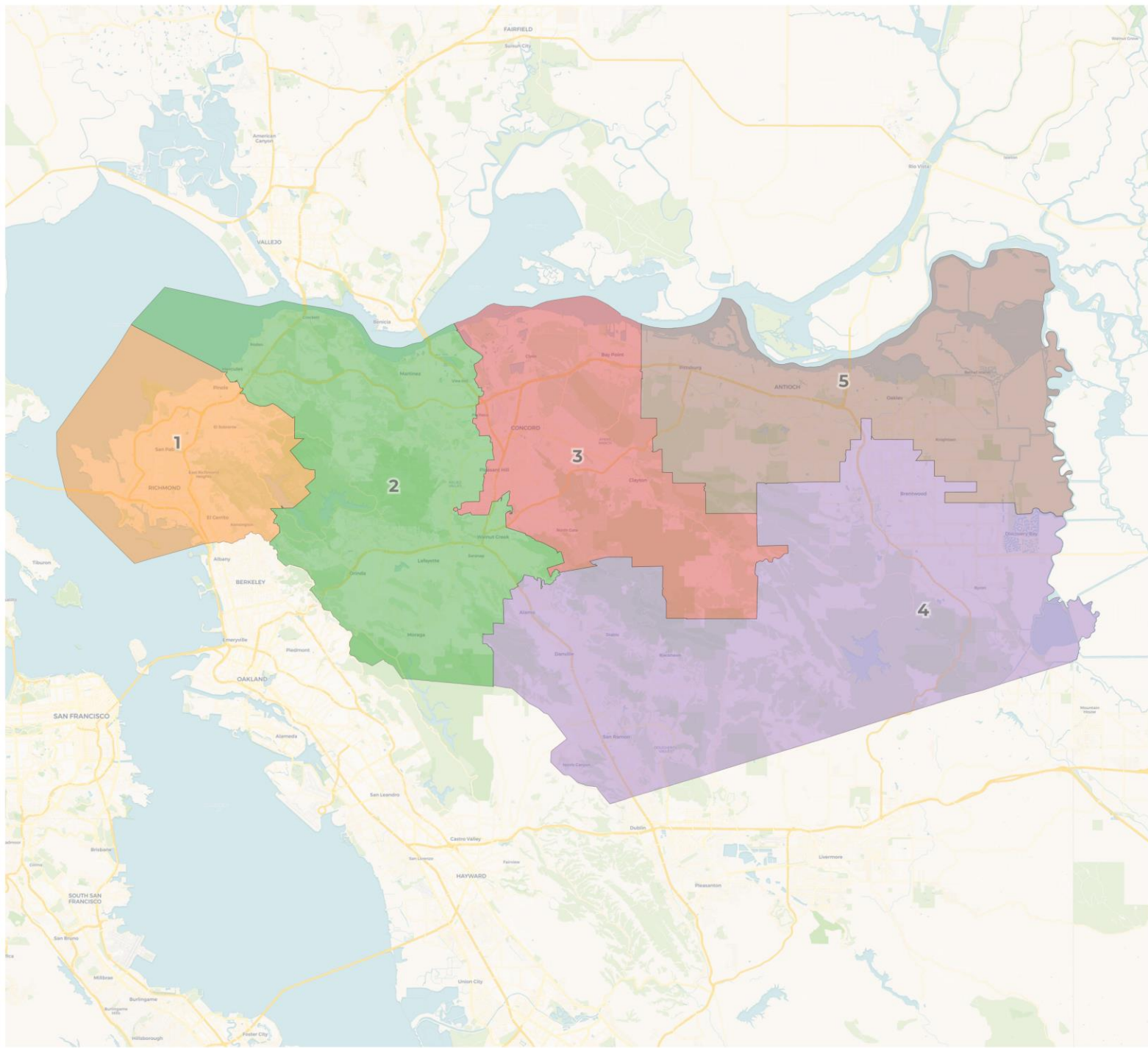




Draft Map Plans

Each draft plan is provided with both a PDF and Online Web-based format

- **Draft Map C - Drawn from scratch using USDs and Elementary school district.**

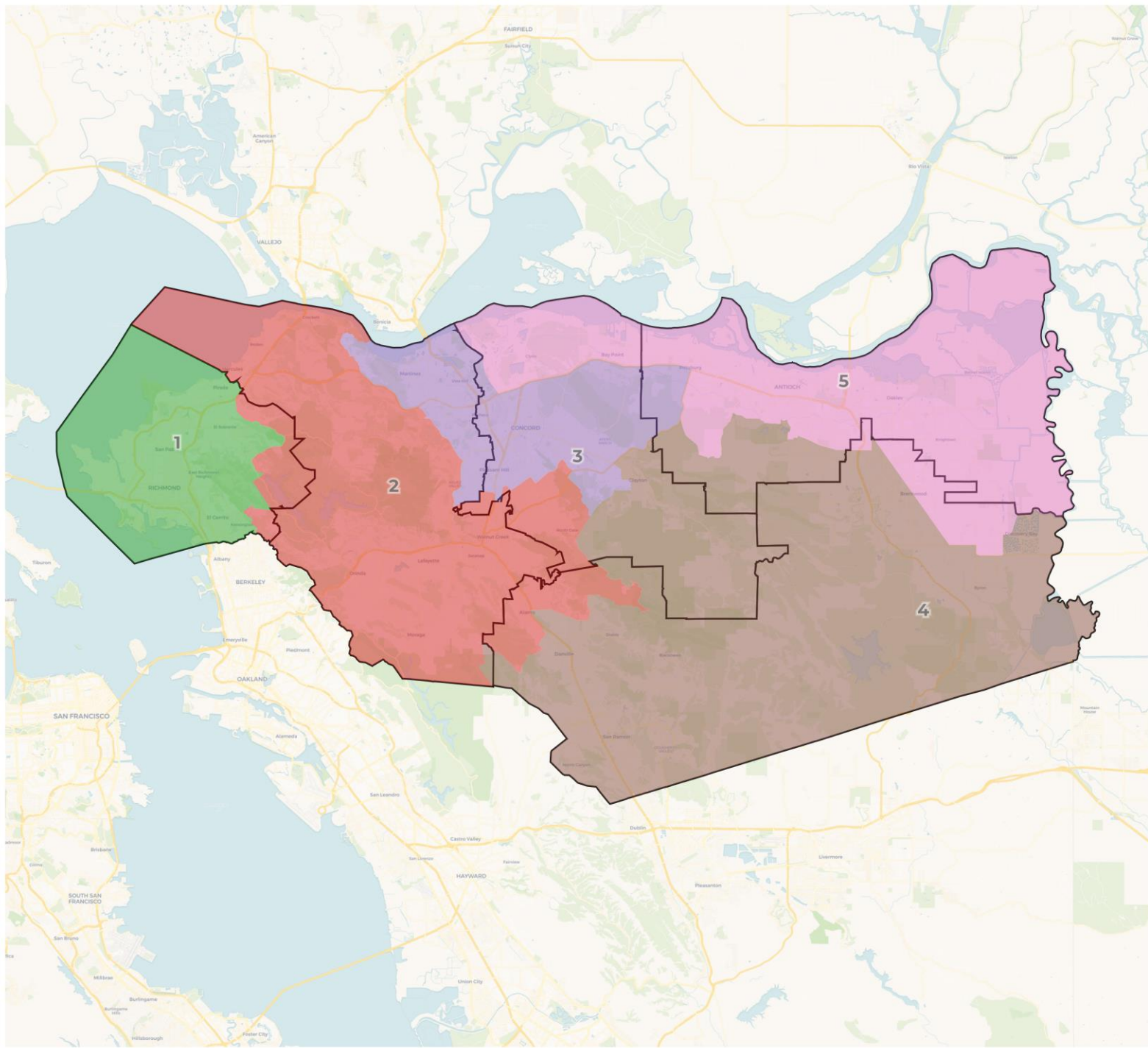


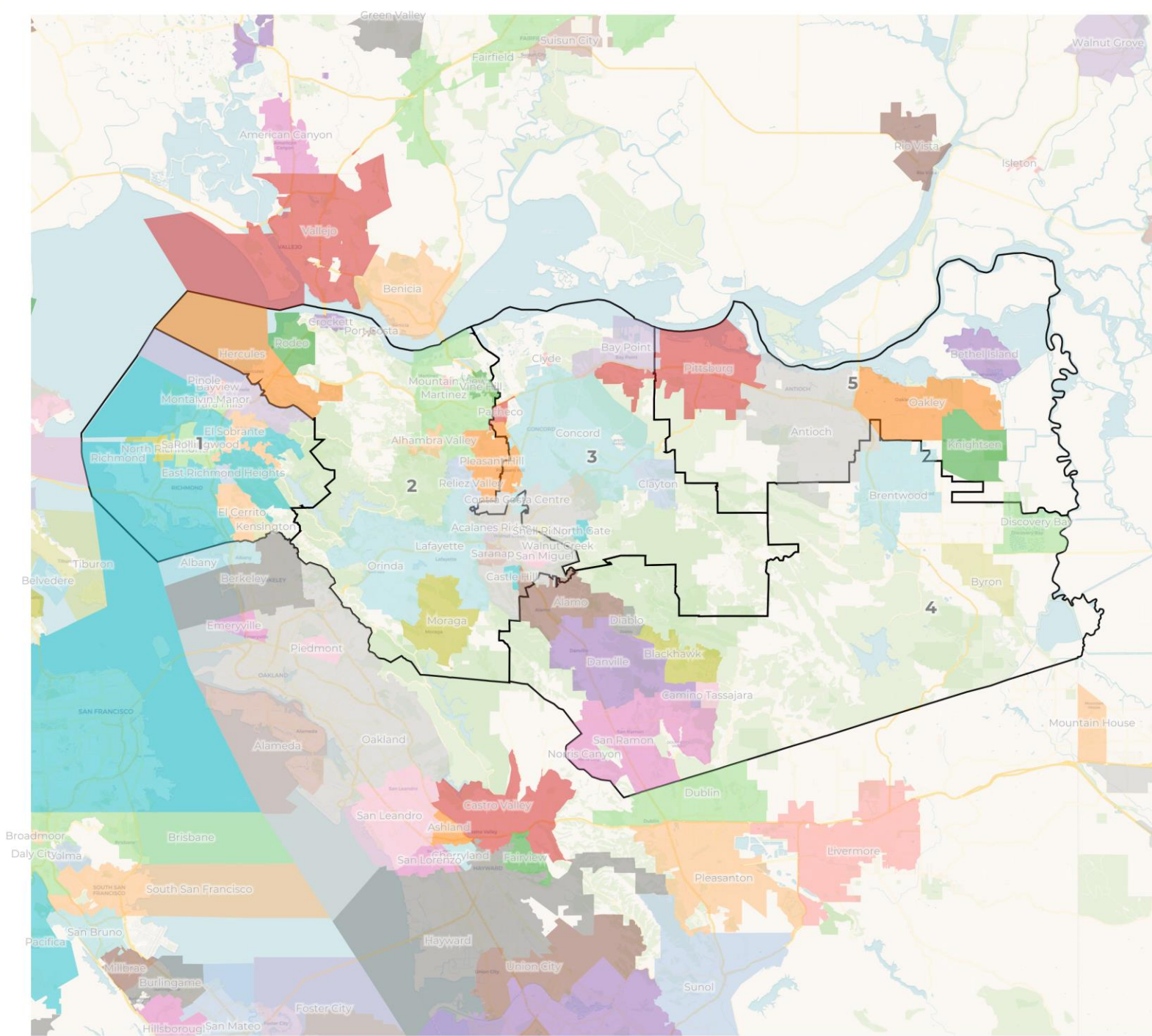
2020 Census

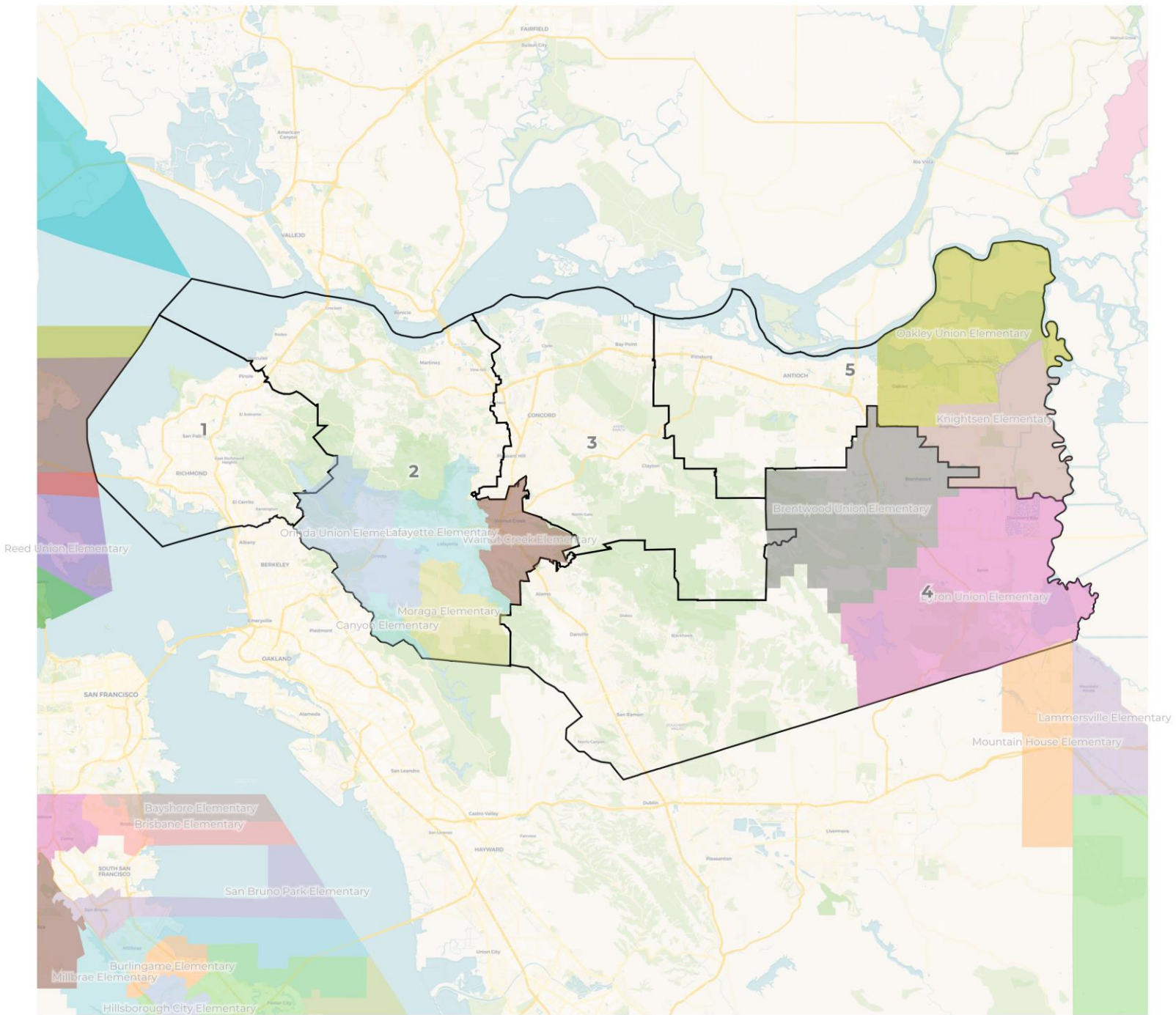
	1	2	3	4	5
Population	236,010	228,613	228,329	247,209	227,908
Deviation	2,396	-5,001	-5,285	13,595	-5,706
Deviation %	1.0%	-2.1%	-2.3%	5.8%	-2.4%
Other	66,940	148,271	115,707	134,317	73,862
Other %	28.4%	64.9%	50.7%	54.3%	32.4%
Latino	95,003	30,600	64,877	35,123	89,822
Latino %	40.3%	13.4%	28.4%	14.2%	39.4%
Asian	40,760	40,174	37,761	69,155	26,698
Asian %	17.3%	17.6%	16.5%	28.0%	11.7%
Black	33,307	9,568	9,984	8,614	37,526
Black %	14.1%	4.2%	4.4%	3.5%	16.5%

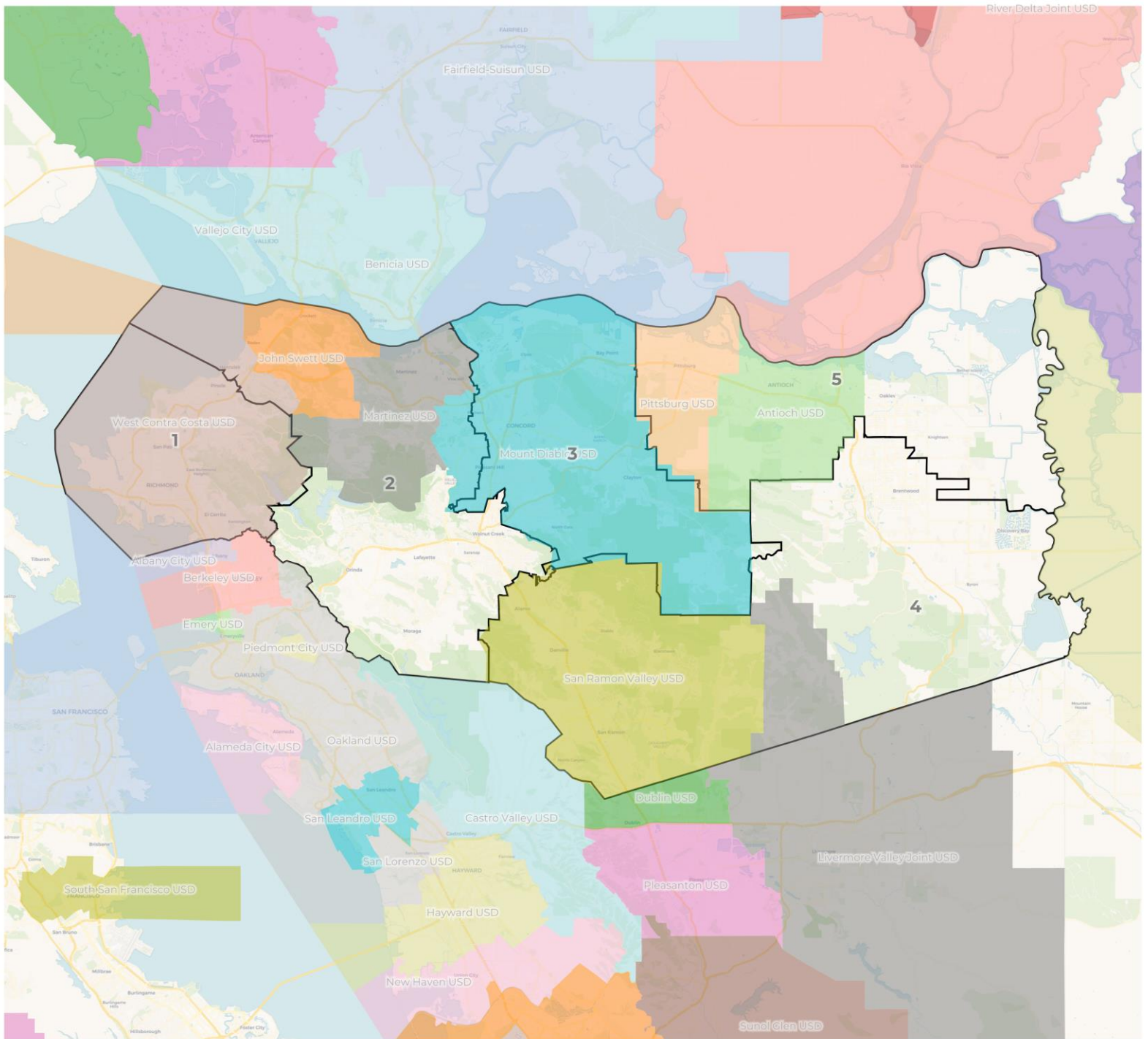
Citizen Voting Age Population (CVAP)

	1	2	3	4	5
Total CVAP	140,908	170,609	154,243	156,882	140,302
Other CVAP	52,449	121,629	96,739	103,884	61,244
Other CVAP %	37.2%	71.3%	62.7%	66.2%	43.7%
Latino CVAP	35,138	17,411	28,645	17,424	39,098
Latino CVAP %	24.9%	10.2%	18.6%	11.1%	27.9%
Asian CVAP	26,038	24,455	21,680	29,292	14,134
Asian CVAP %	18.5%	14.3%	14.1%	18.7%	10.1%
Black CVAP	27,283	7,114	7,179	6,282	25,826
Black CVAP %	19.4%	4.2%	4.7%	4.0%	18.4%









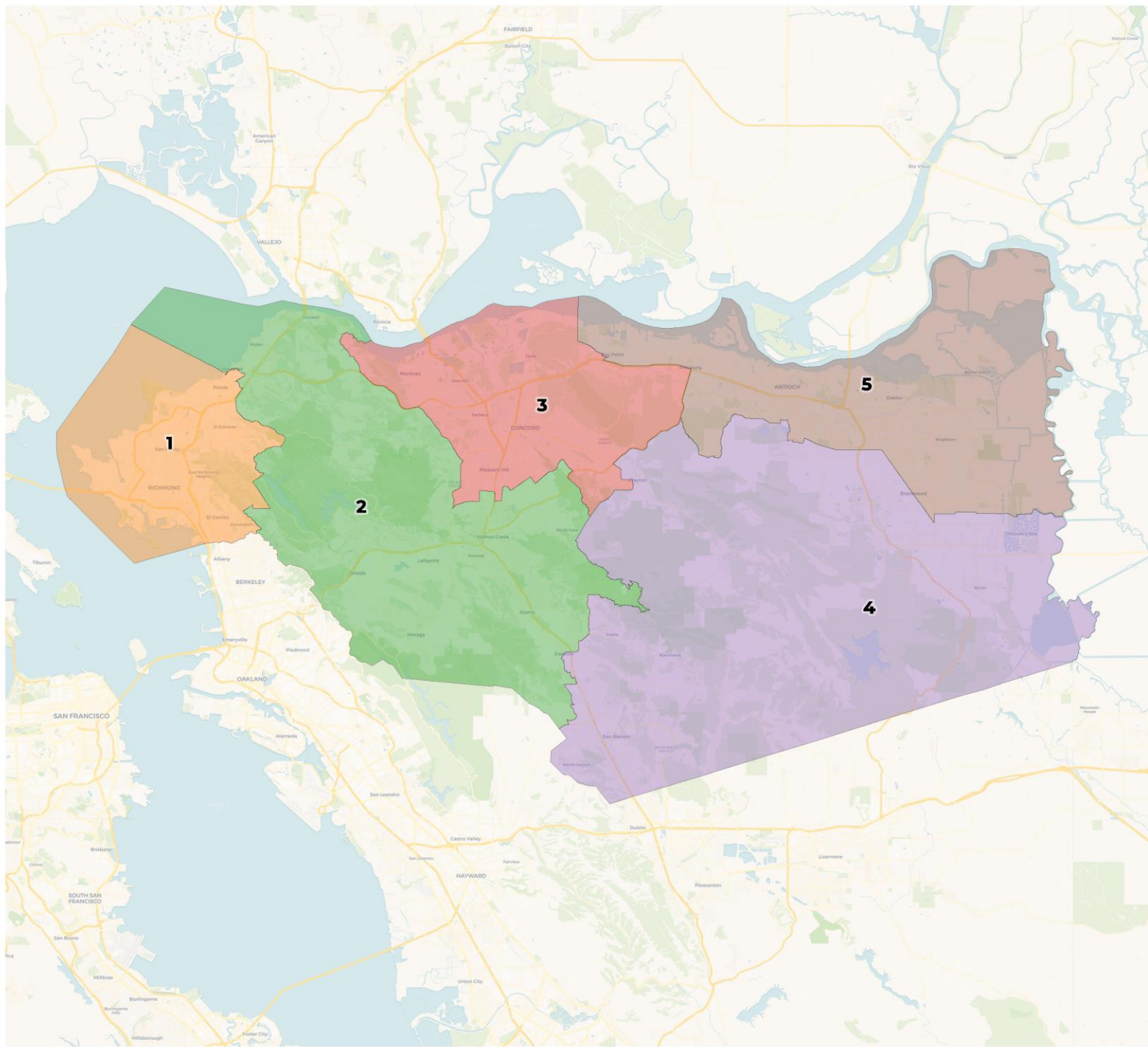
Contra Costa County Redistricting Process

Timeline for Upcoming Meetings

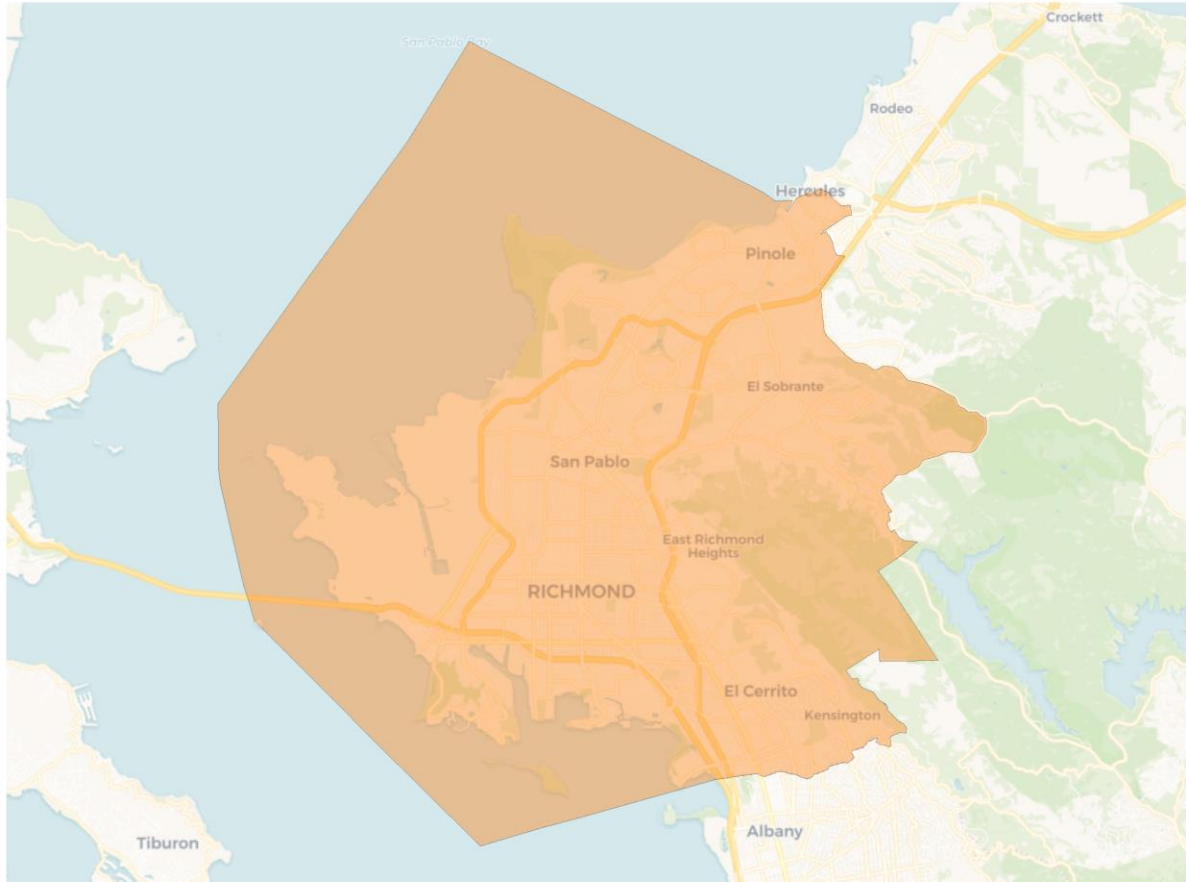
- December 15th, 2021 Presentation on Data and Next Steps
- January 19th, 2022 Presentation on Draft Maps
- February 9th, 2022 Vote on Final Maps



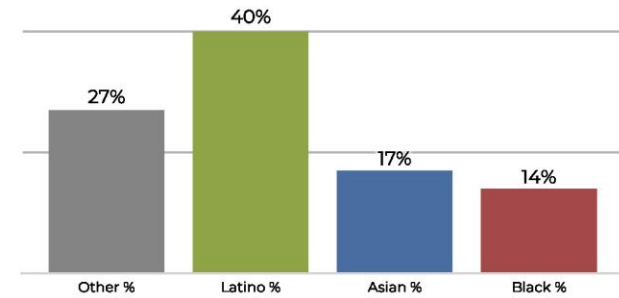
REDISTRICTING PARTNERS



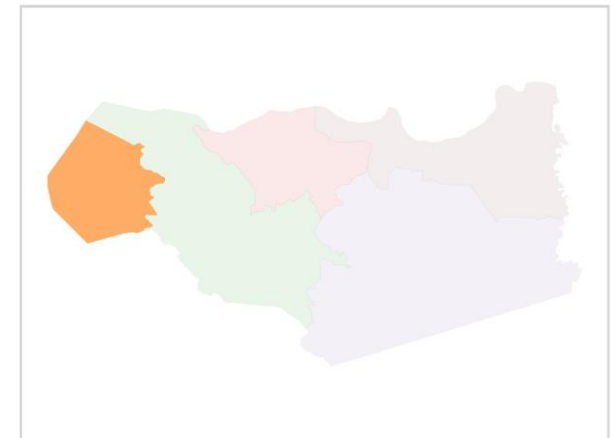
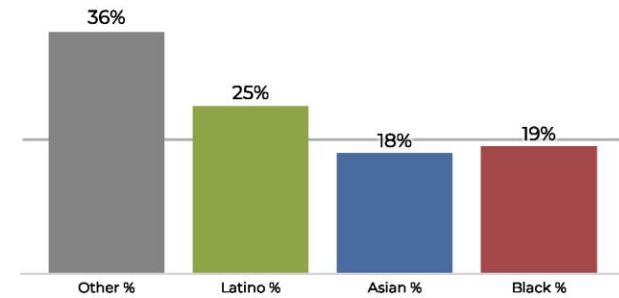
District 1



2020 Census

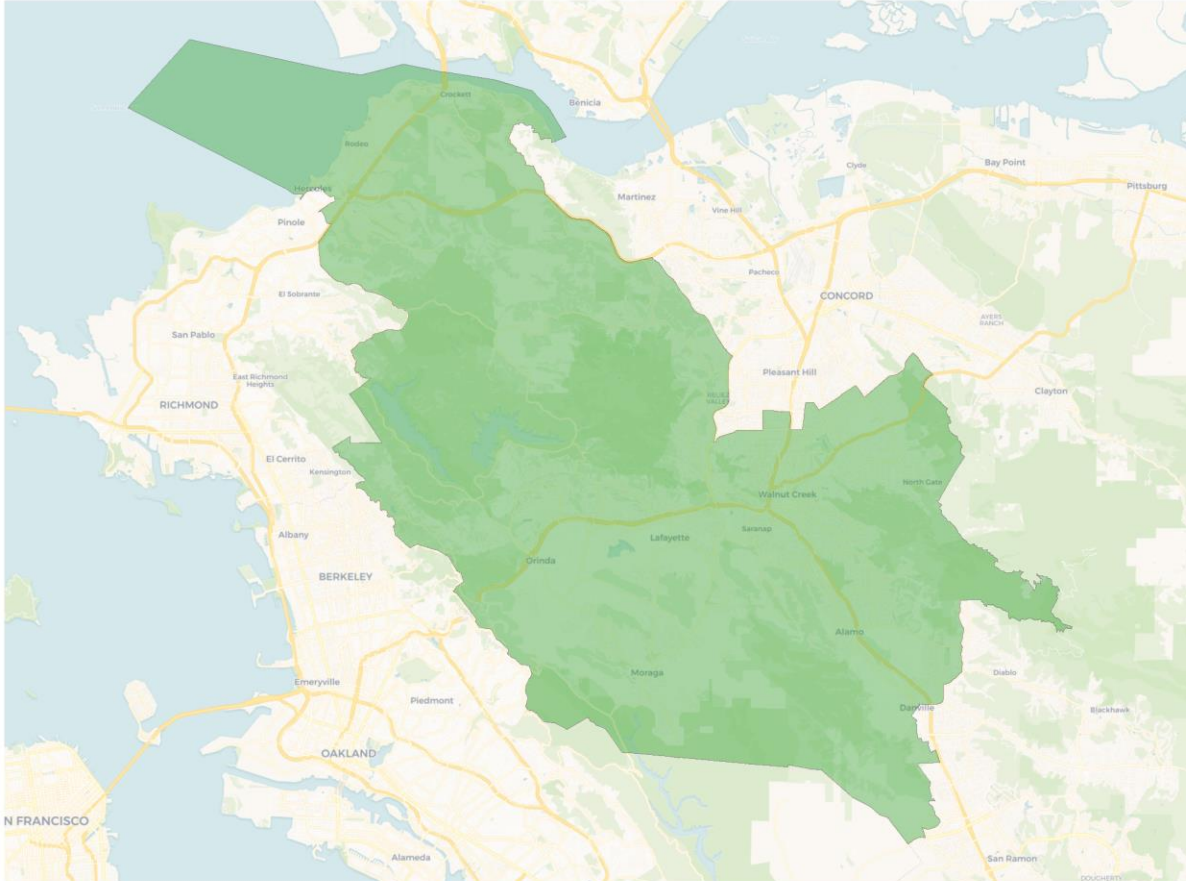


Citizen Voting Age Population

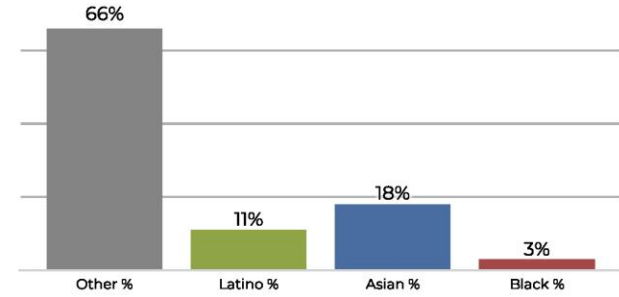


Population	Deviation	Deviation %	Other	Other %	Latino	Latino %	Asian	Asian %	Black	Black %
231,678	-1,936	-0.8%	64,442	27.8%	93,730	40.5%	40,304	17.4%	33,202	14.3%
Total CVAP	Other CVAP	Other CVAP %	Latino CVAP	Latino CVAP %	Asian CVAP	Asian CVAP %	Black CVAP	Black CVAP %		
137,518	50,115	36.4%	34,473	25.1%	25,653	18.7%	27,277	19.8%		

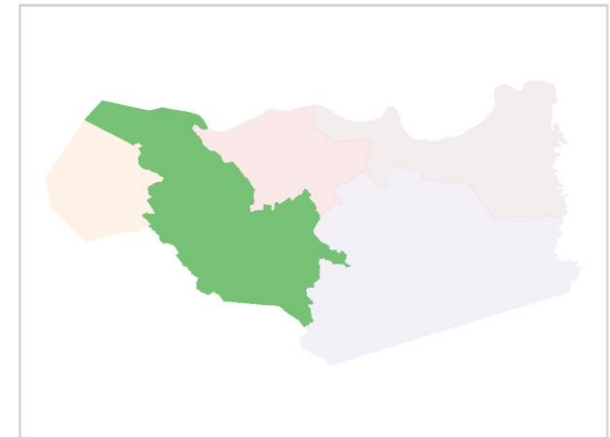
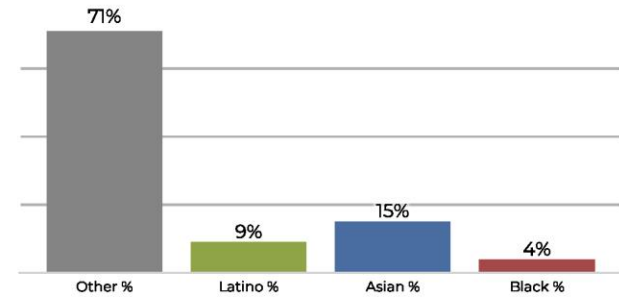
District 2



2020 Census

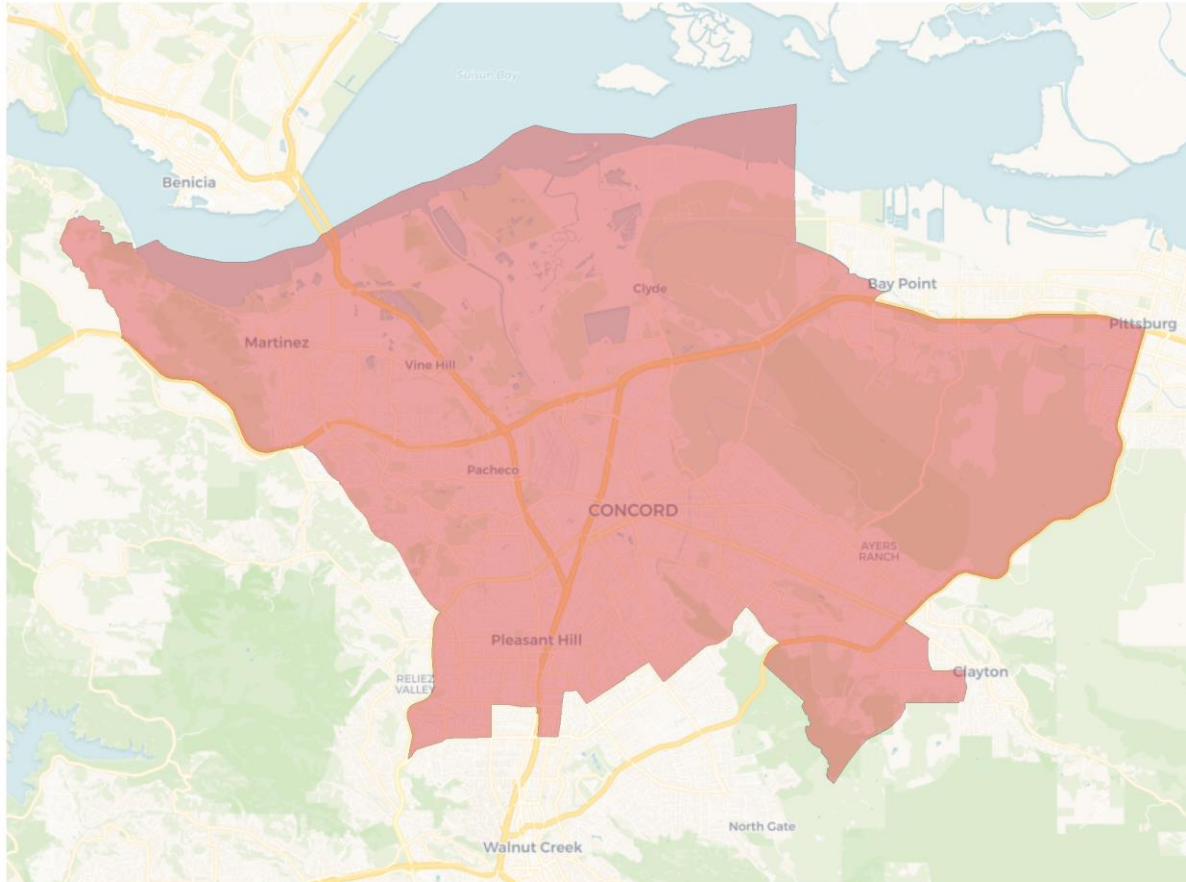


Citizen Voting Age Population

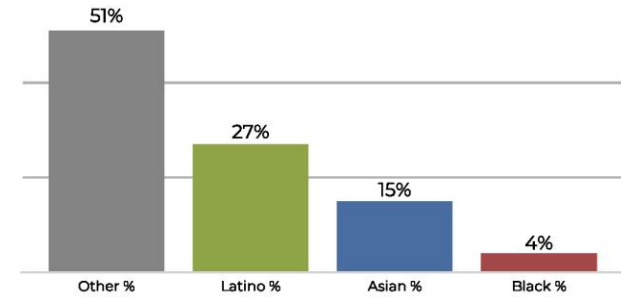


Population	Deviation	Deviation %	Other	Other %	Latino	Latino %	Asian	Asian %	Black	Black %
232,129	-1,485	-0.6%	153,471	66.1%	27,047	11.7%	42,943	18.5%	8,668	3.7%
Total CVAP	Other CVAP	Other CVAP %	Latino CVAP	Latino CVAP %	Asian CVAP	Asian CVAP %	Black CVAP	Black CVAP %		
173,014	123,526	71.4%	15,535	9.0%	27,094	15.7%	6,859	4.0%		

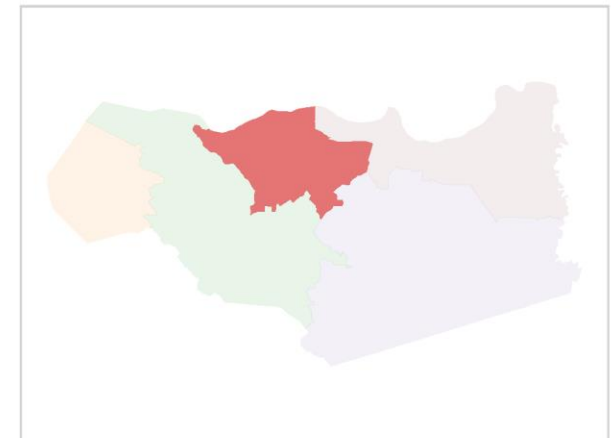
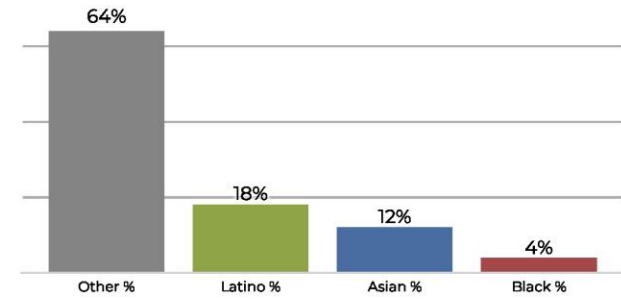
District 3



2020 Census

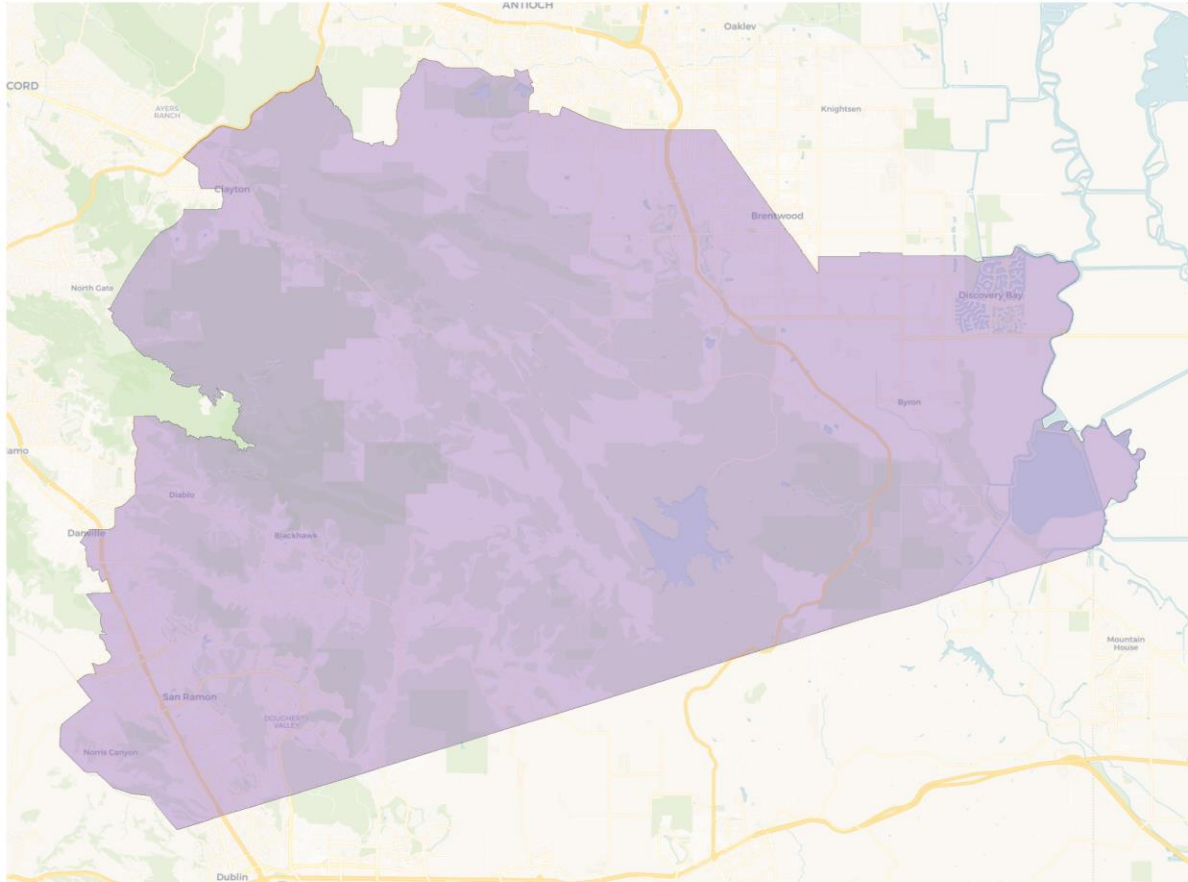


Citizen Voting Age Population

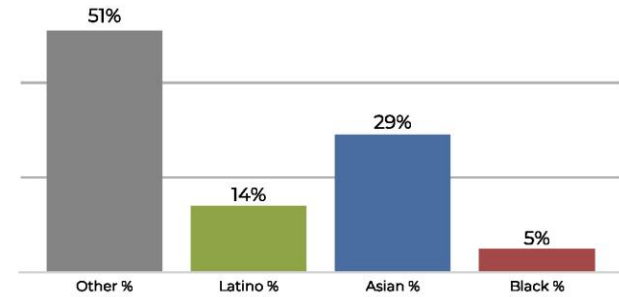


Population	Deviation	Deviation %	Other	Other %	Latino	Latino %	Asian	Asian %	Black	Black %
235,048	1,434	0.6%	121,857	51.8%	65,407	27.8%	37,059	15.8%	10,725	4.6%
Total CVAP	Other CVAP	Other CVAP %	Latino CVAP	Latino CVAP %	Asian CVAP	Asian CVAP %	Black CVAP	Black CVAP %		
160,675	102,760	64.0%	30,398	18.9%	19,842	12.3%	7,675	4.8%		

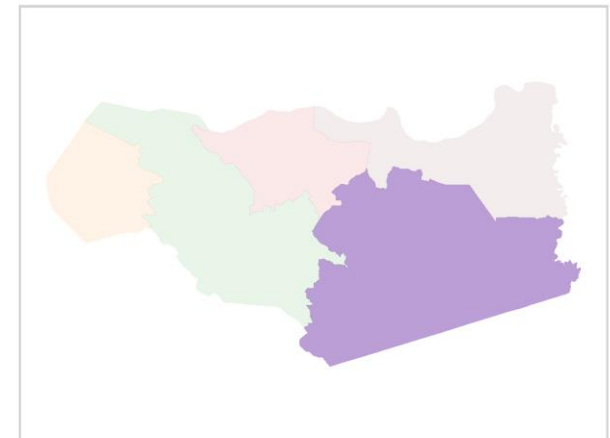
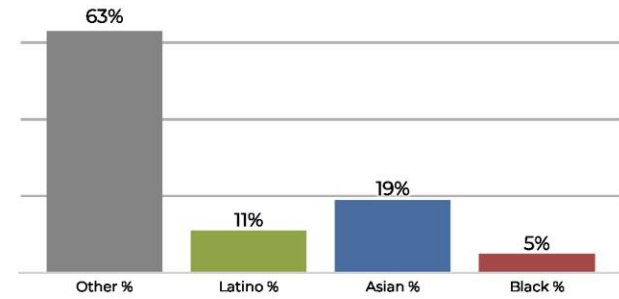
District 4



2020 Census

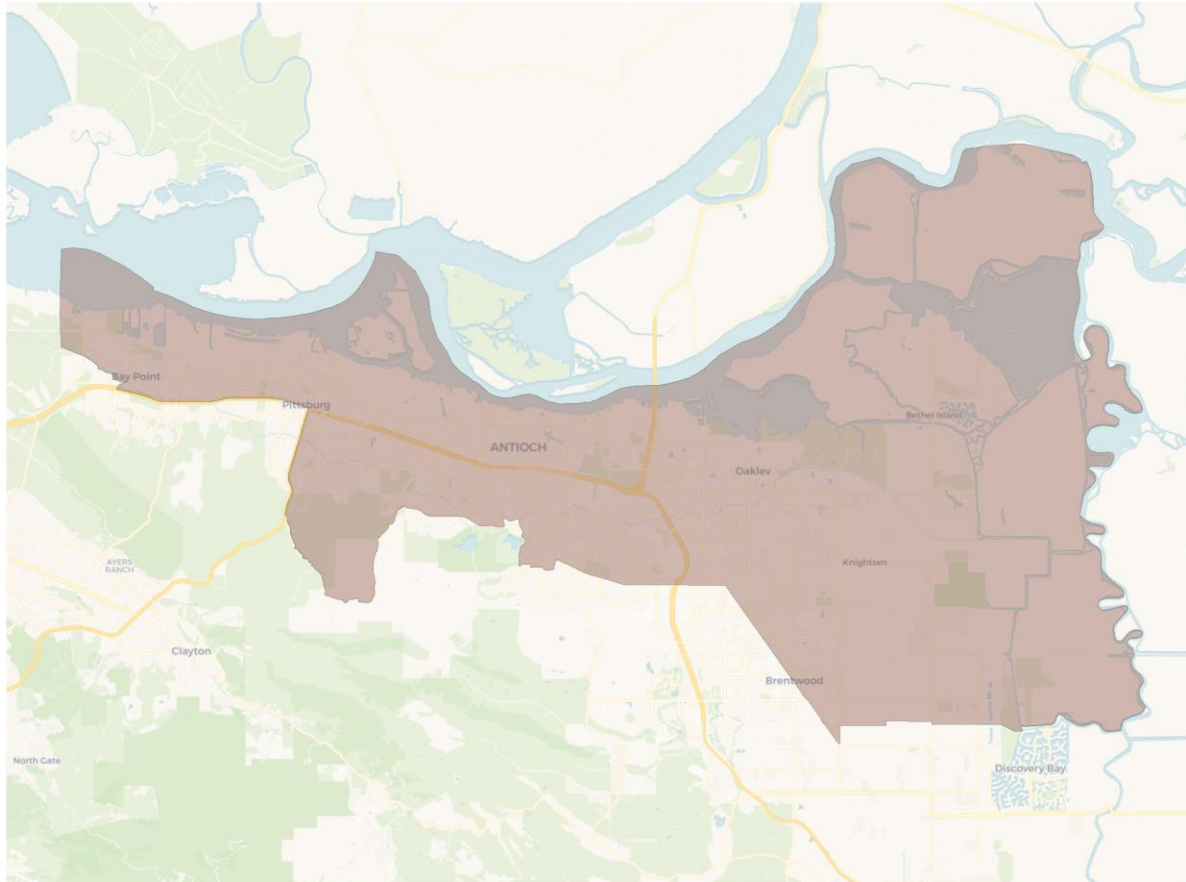


Citizen Voting Age Population

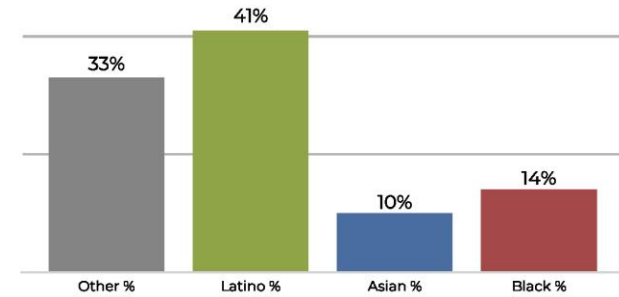


Population	Deviation	Deviation %	Other	Other %	Latino	Latino %	Asian	Asian %	Black	Black %
234,798	1,184	0.5%	121,108	51.6%	33,150	14.1%	68,743	29.3%	11,797	5.0%
Total CVAP	Other CVAP	Other CVAP %	Latino CVAP	Latino CVAP %	Asian CVAP	Asian CVAP %	Black CVAP	Black CVAP %		
151,223	95,941	63.4%	17,694	11.7%	28,811	19.1%	8,777	5.8%		

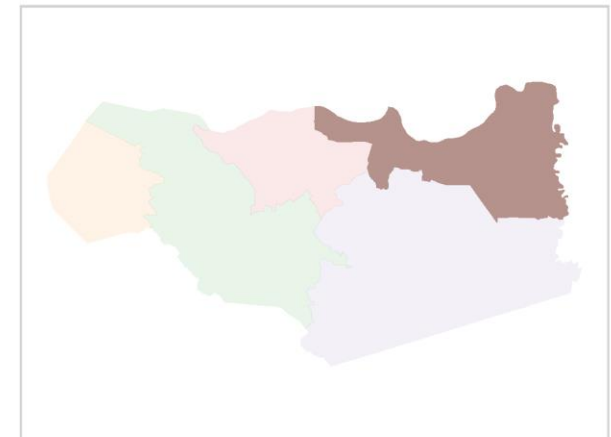
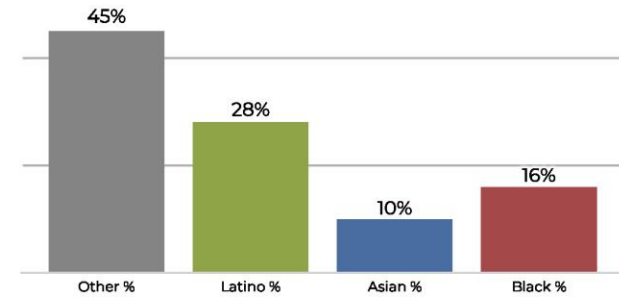
District 5



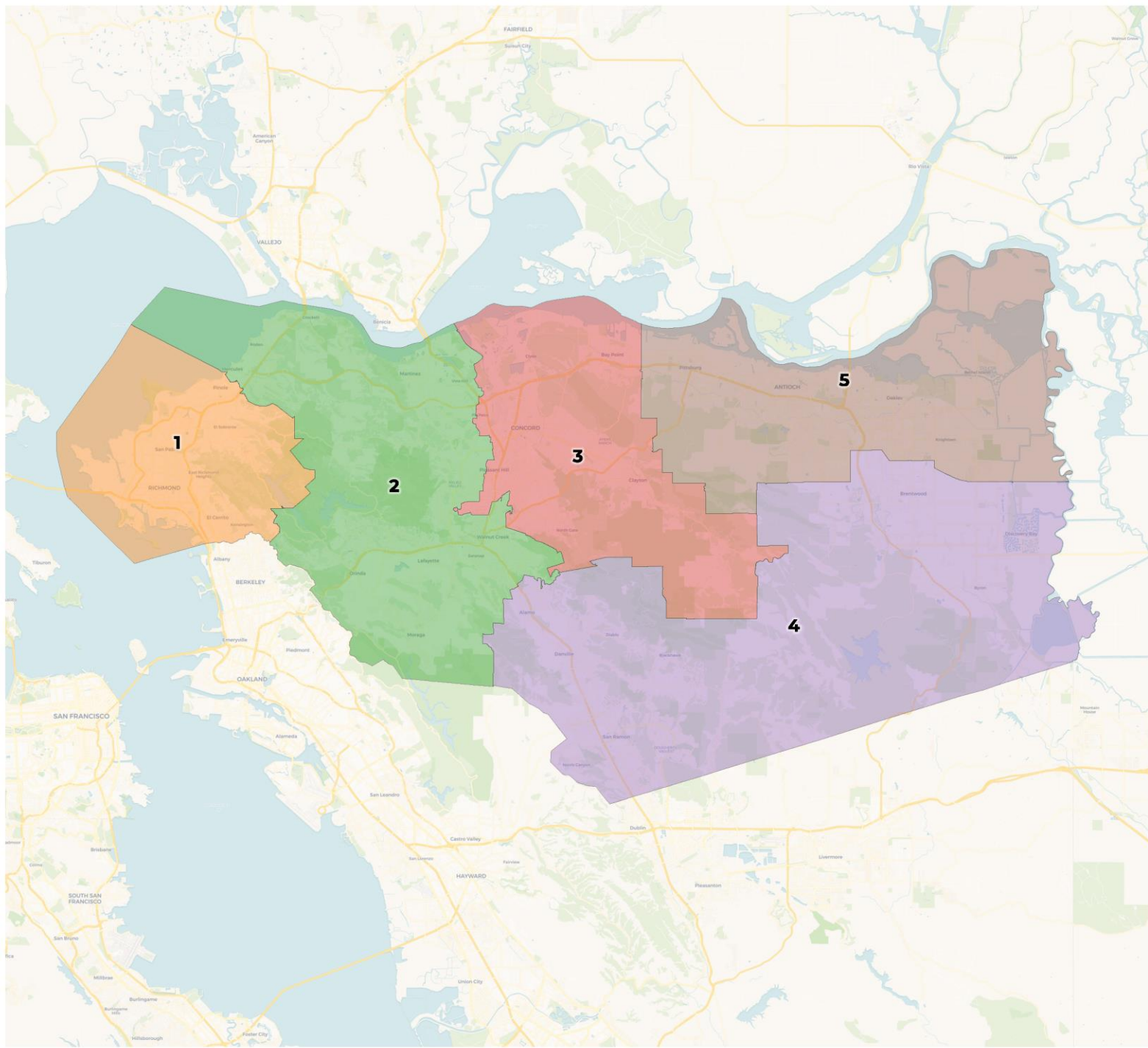
2020 Census



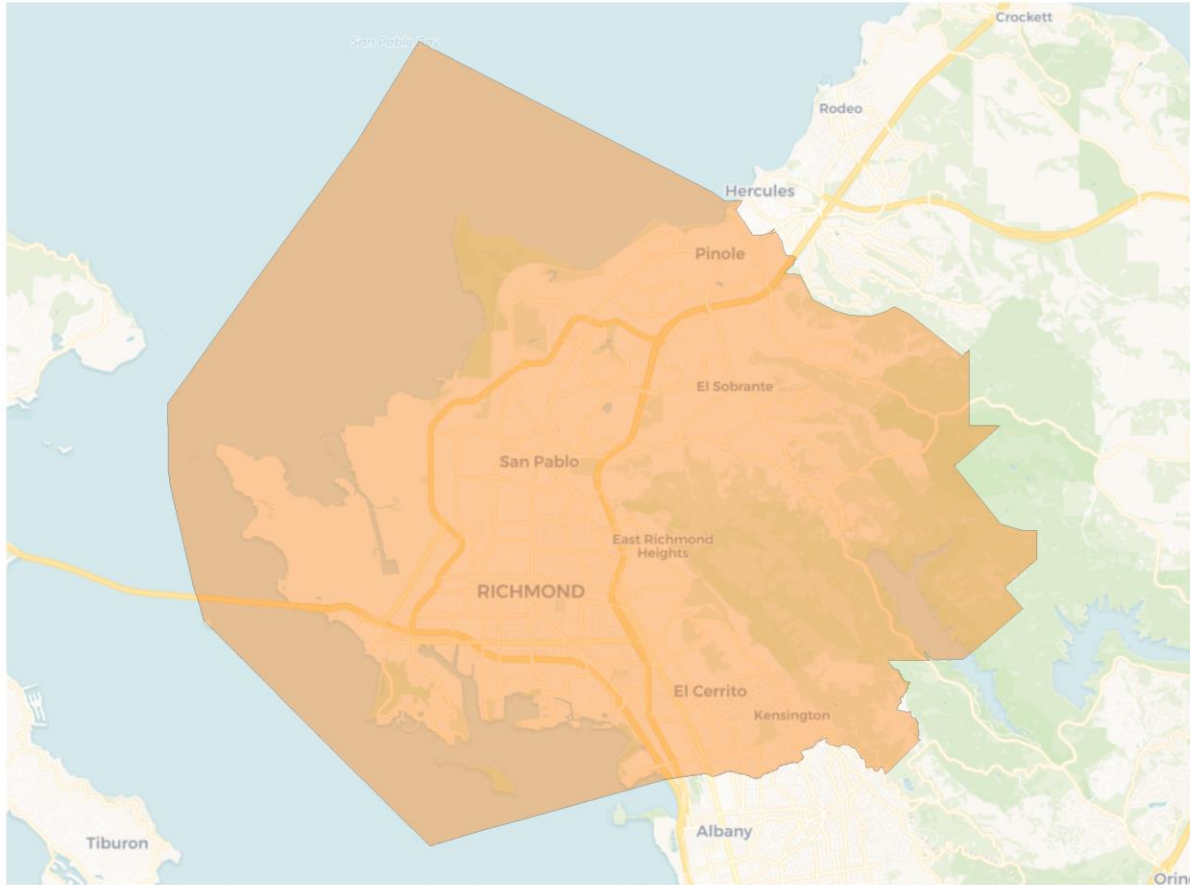
Citizen Voting Age Population



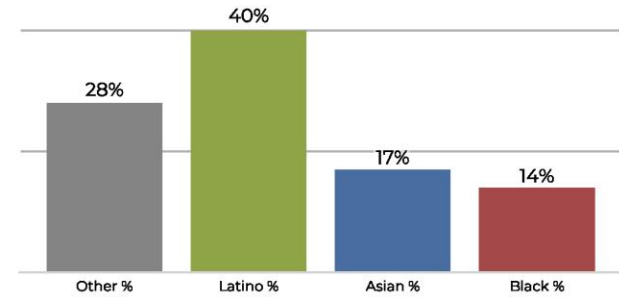
Population	Deviation	Deviation %	Other	Other %	Latino	Latino %	Asian	Asian %	Black	Black %
234,416	802	0.3%	78,219	33.4%	96,091	41.0%	25,499	10.9%	34,607	14.8%
Total CVAP	Other CVAP	Other CVAP %	Latino CVAP	Latino CVAP %	Asian CVAP	Asian CVAP %	Black CVAP	Black CVAP %		
140,514	63,603	45.3%	39,616	28.2%	14,199	10.1%	23,096	16.4%		



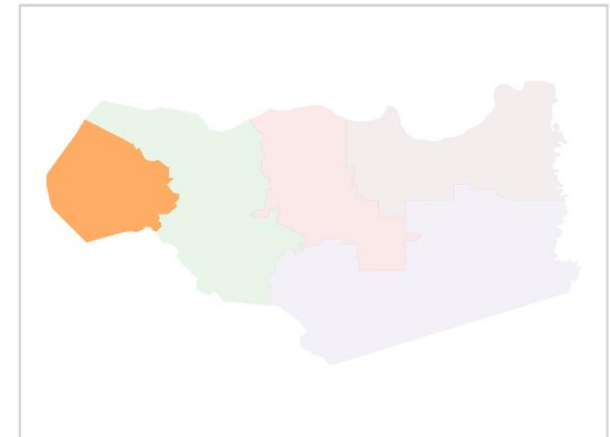
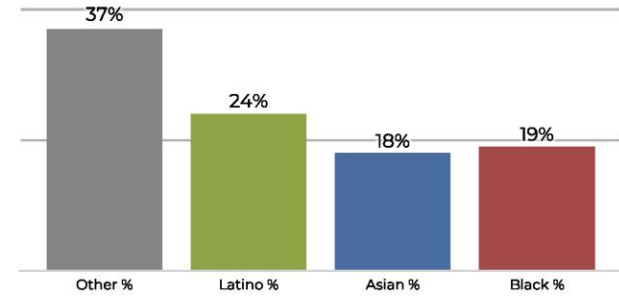
District 1



2020 Census

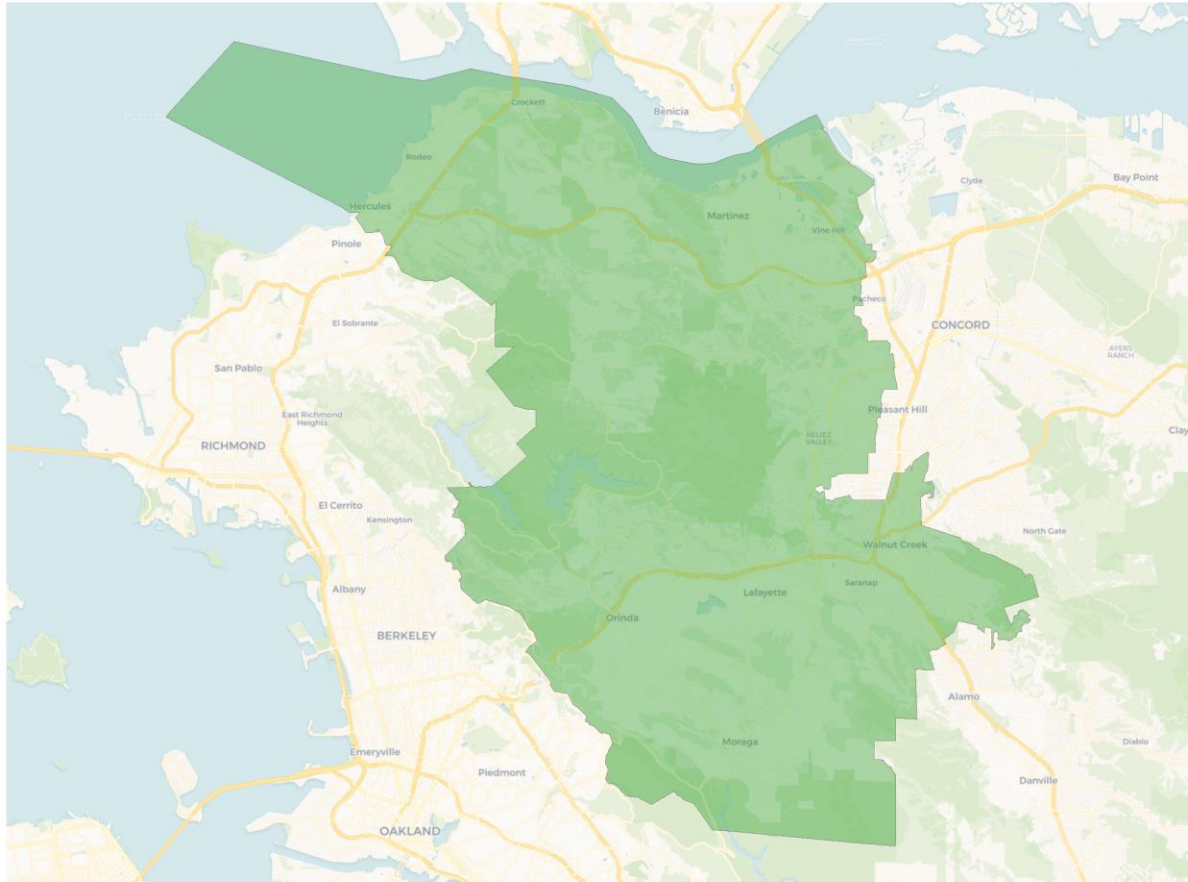


Citizen Voting Age Population

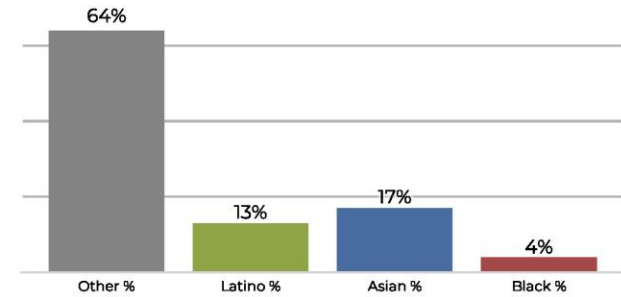


Population	Deviation	Deviation %	Other	Other %	Latino	Latino %	Asian	Asian %	Black	Black %
236,010	2,396	1.0%	66,940	28.4%	95,003	40.3%	40,760	17.3%	33,307	14.1%
Total CVAP	Other CVAP	Other CVAP %	Latino CVAP	Latino CVAP %	Asian CVAP	Asian CVAP %	Black CVAP	Black CVAP %		
140,908	52,449	37.2%	35,138	24.9%	26,038	18.5%	27,283	19.4%		

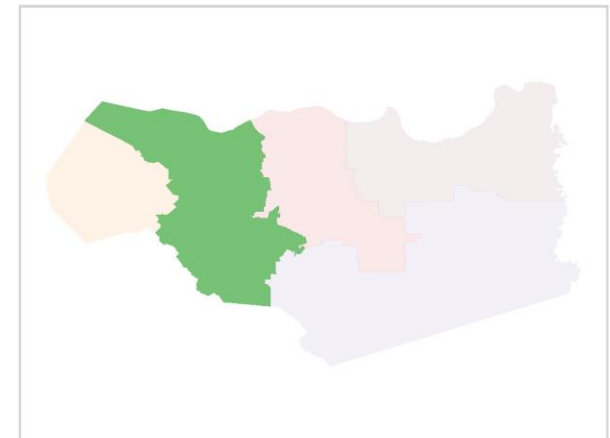
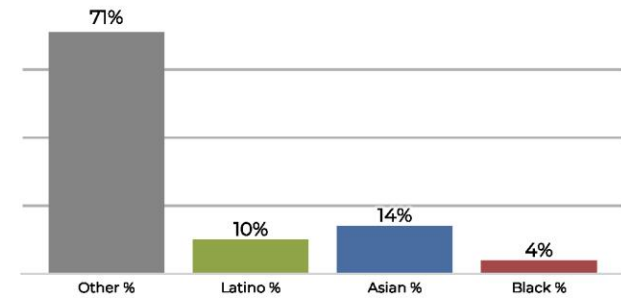
District 2



2020 Census

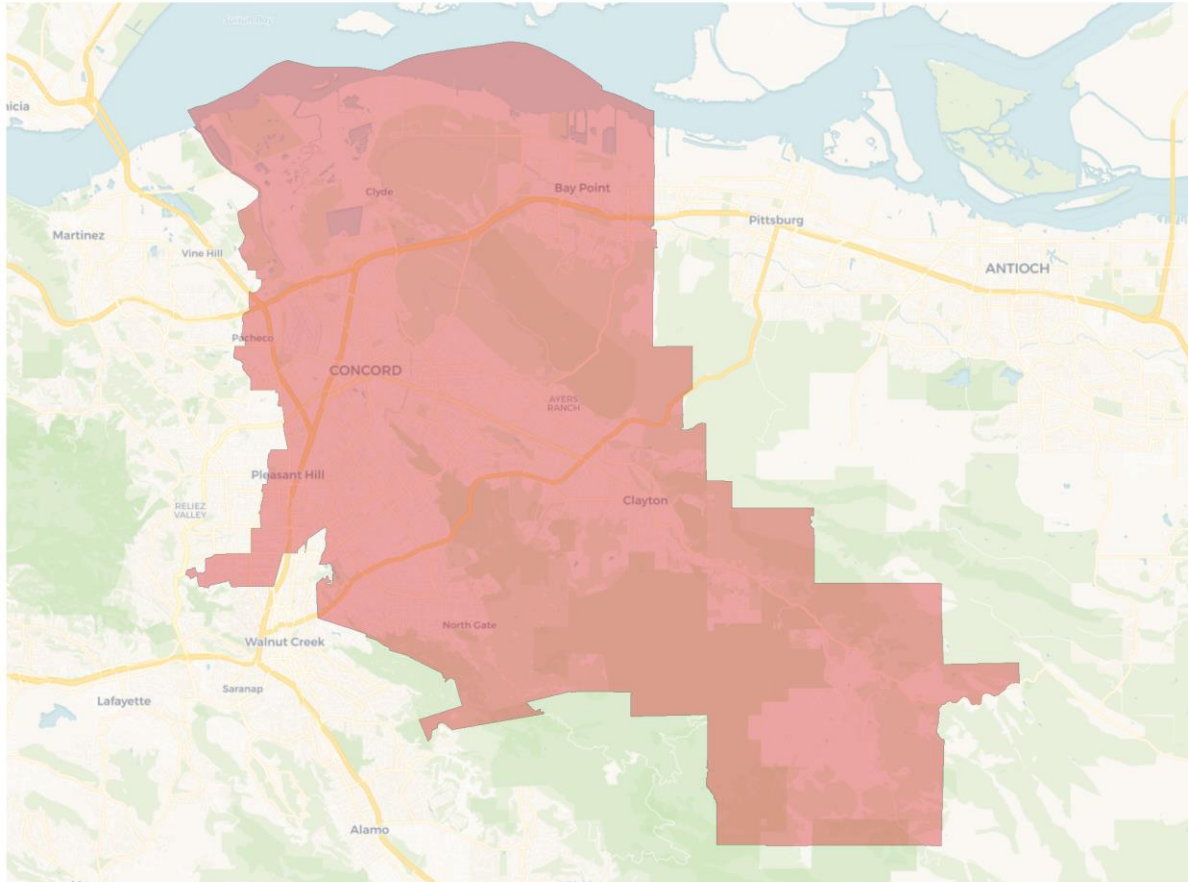


Citizen Voting Age Population

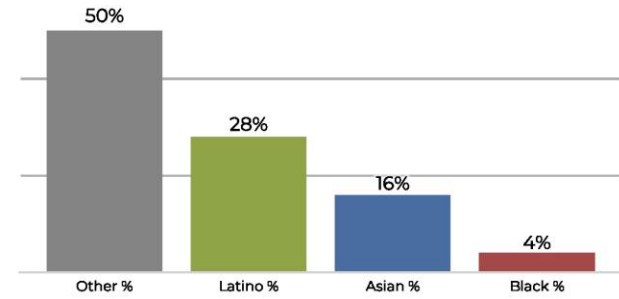


Population	Deviation	Deviation %	Other	Other %	Latino	Latino %	Asian	Asian %	Black	Black %
228,613	-5,001	-2.1%	148,271	64.9%	30,600	13.4%	40,174	17.6%	9,568	4.2%
Total CVAP	Other CVAP	Other CVAP %	Latino CVAP	Latino CVAP %	Asian CVAP	Asian CVAP %	Black CVAP	Black CVAP %		
170,609	121,629	71.3%	17,411	10.2%	24,455	14.3%	7,114	4.2%		

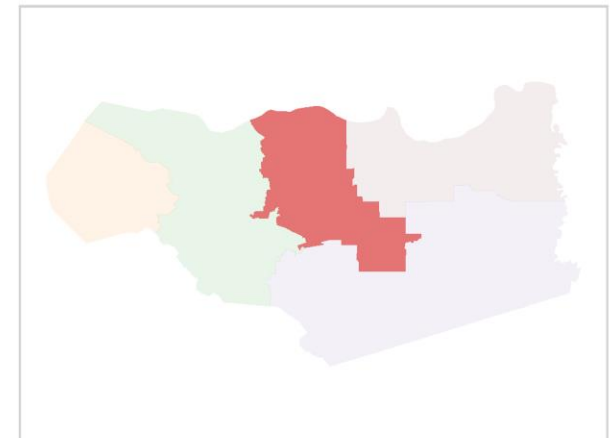
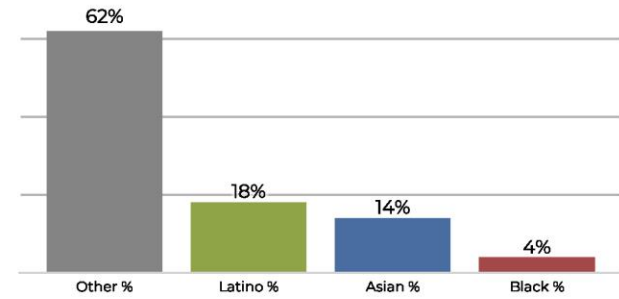
District 3



2020 Census

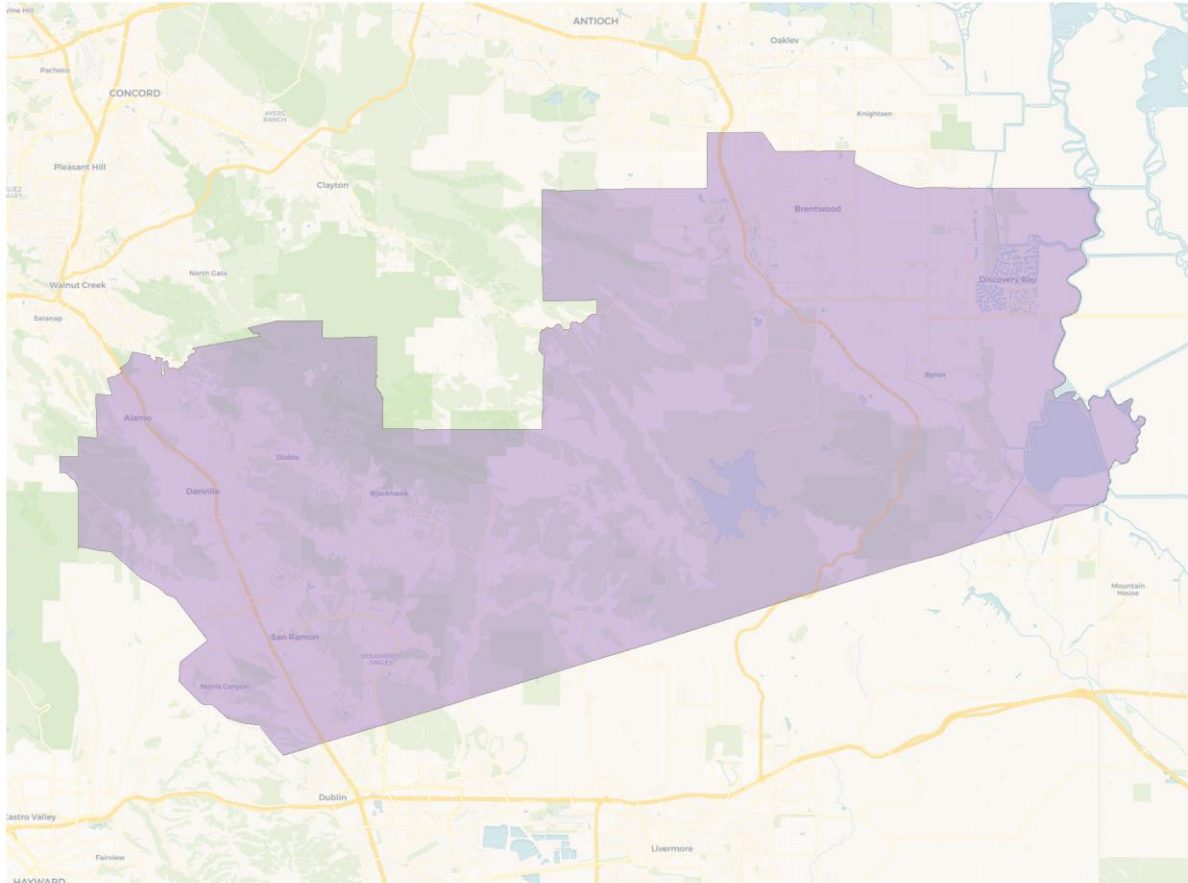


Citizen Voting Age Population

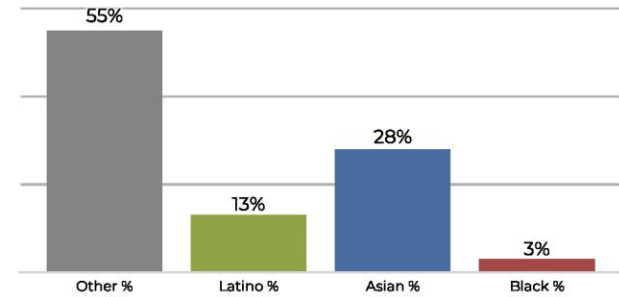


Population	Deviation	Deviation %	Other	Other %	Latino	Latino %	Asian	Asian %	Black	Black %
228,329	-5,285	-2.3%	115,707	50.7%	64,877	28.4%	37,761	16.5%	9,984	4.4%
Total CVAP	Other CVAP	Other CVAP %	Latino CVAP	Latino CVAP %	Asian CVAP	Asian CVAP %	Black CVAP	Black CVAP %		
154,243	96,739	62.7%	28,645	18.6%	21,680	14.1%	7,179	4.7%		

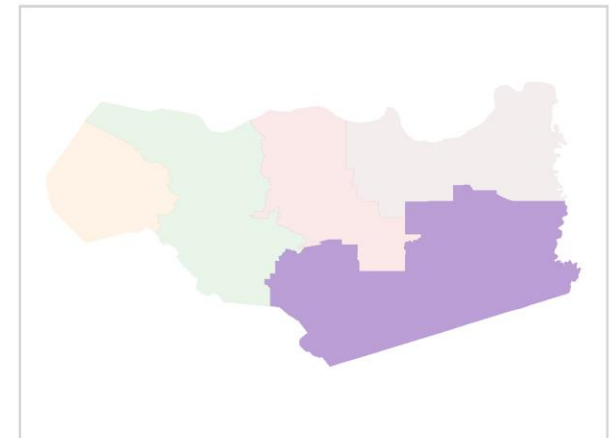
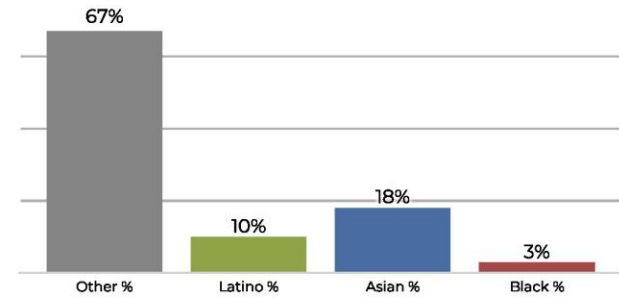
District 4



2020 Census

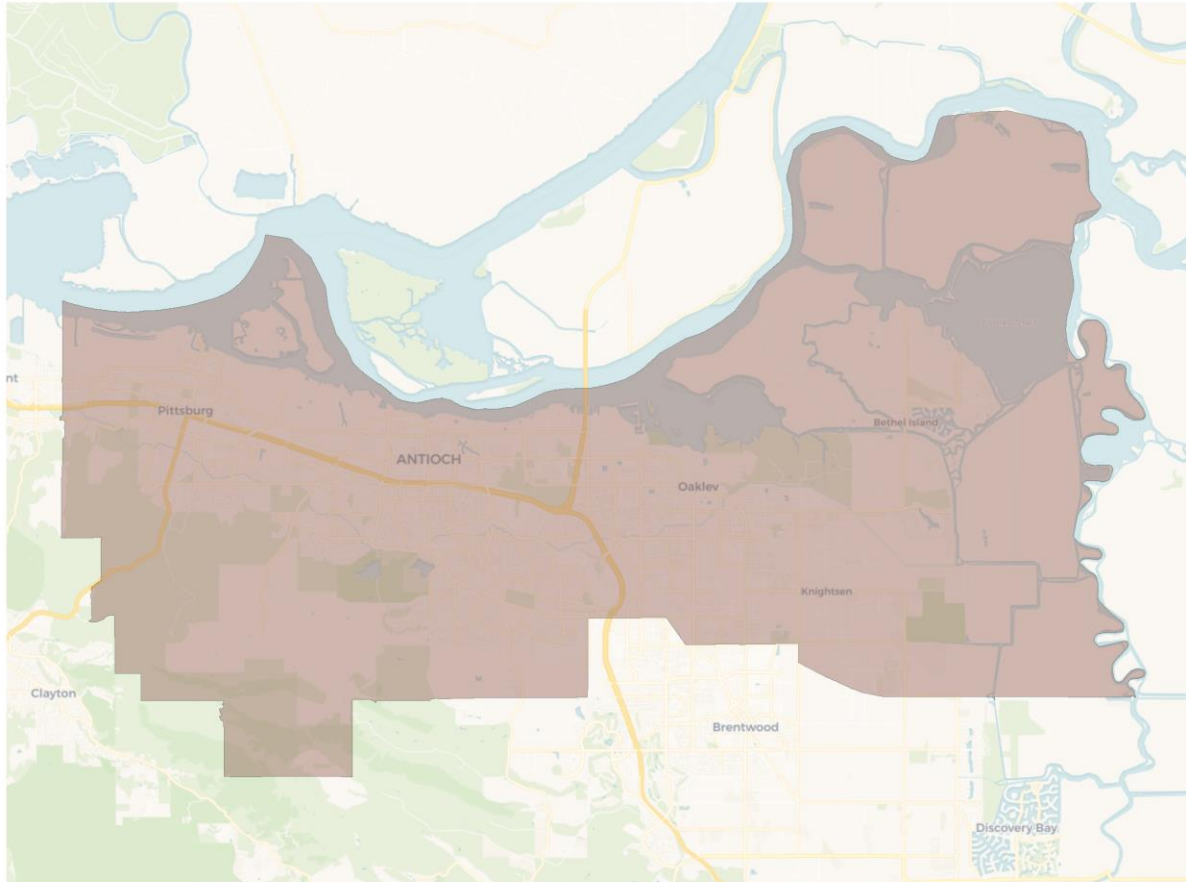


Citizen Voting Age Population

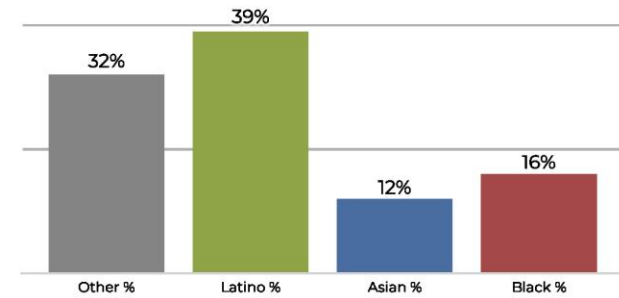


Population	Deviation	Deviation %	Other	Other %	Latino	Latino %	Asian	Asian %	Black	Black %
238,985	5,371	2.3%	131,428	55.0%	32,627	13.7%	67,414	28.2%	7,516	3.1%
Total CVAP	Other CVAP	Other CVAP %	Latino CVAP	Latino CVAP %	Asian CVAP	Asian CVAP %	Black CVAP	Black CVAP %		
151,746	101,779	67.1%	16,148	10.6%	28,299	18.6%	5,520	3.6%		

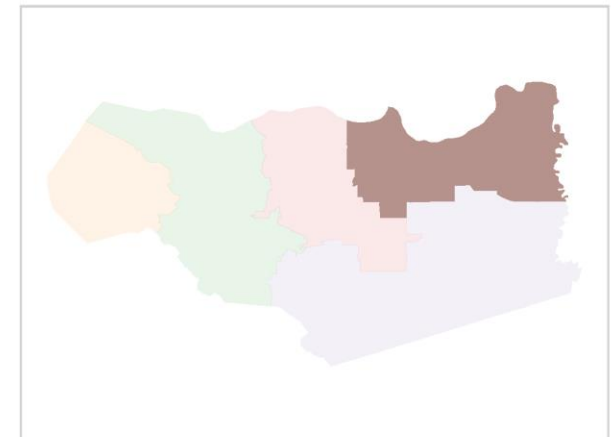
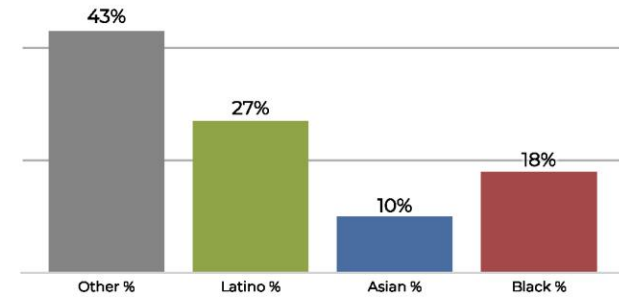
District 5



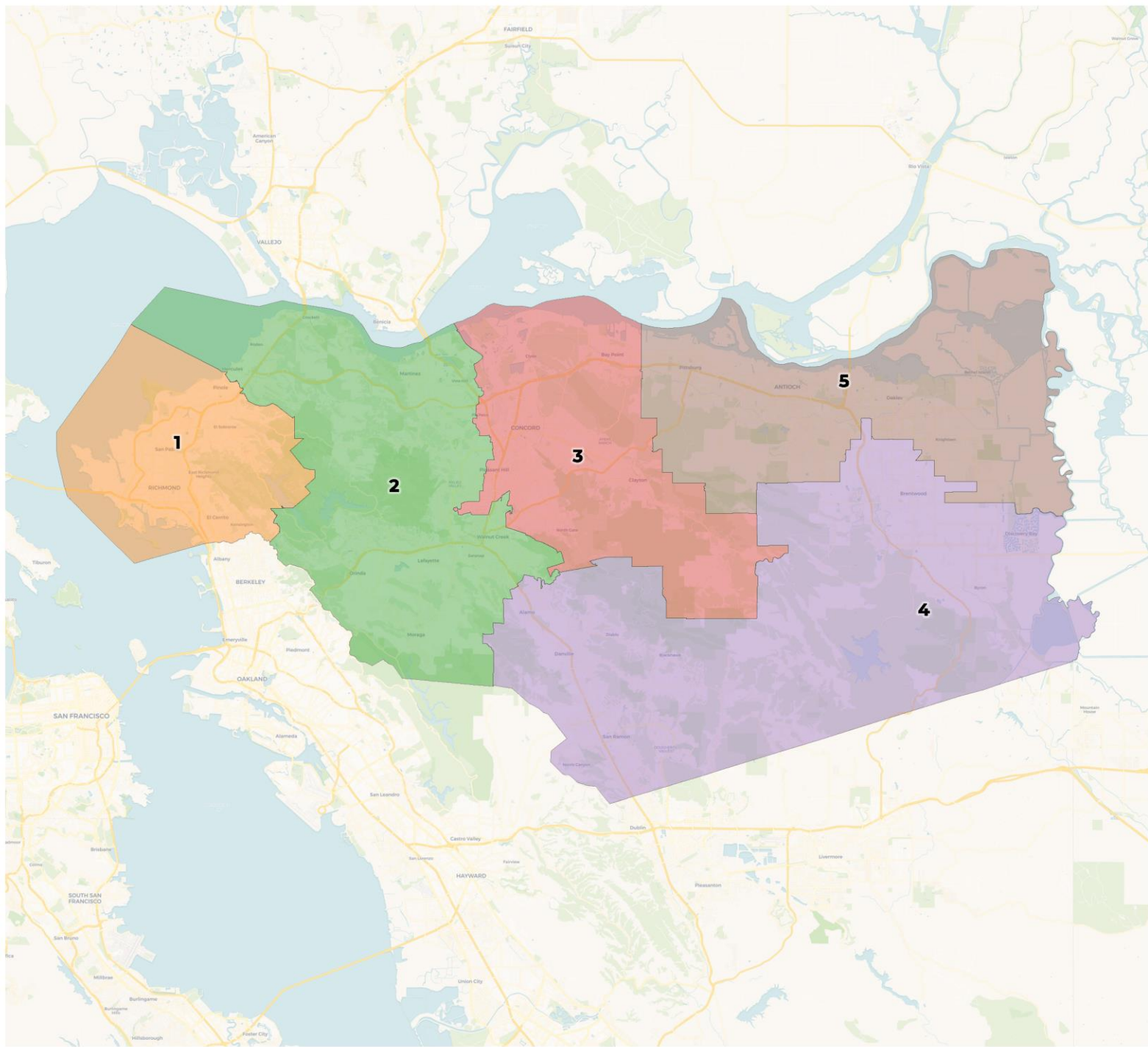
2020 Census



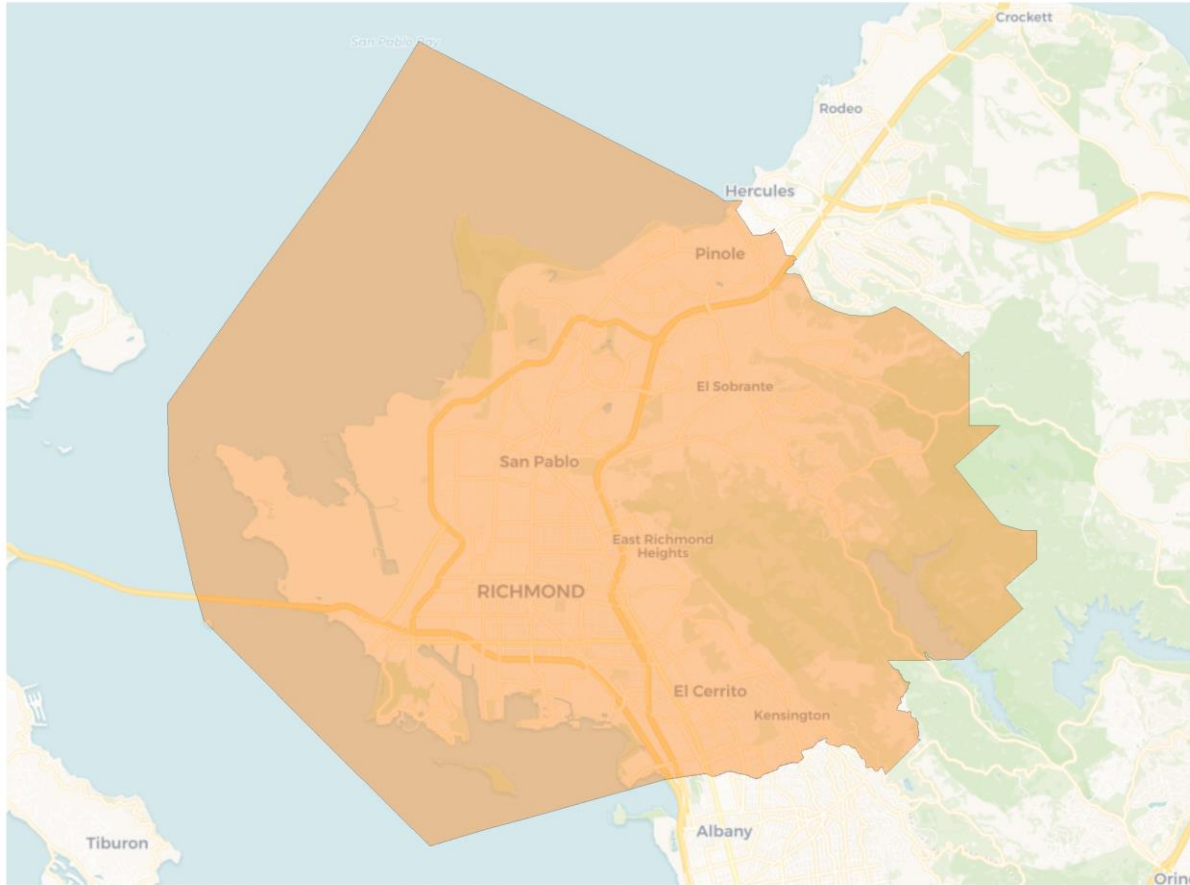
Citizen Voting Age Population



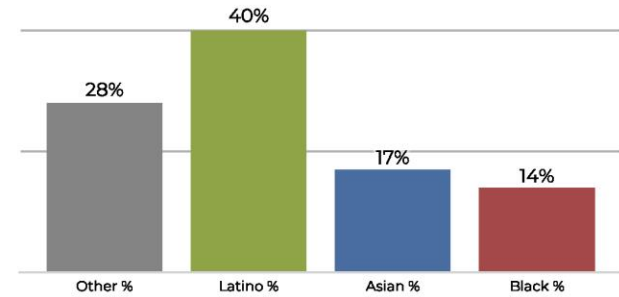
Population	Deviation	Deviation %	Other	Other %	Latino	Latino %	Asian	Asian %	Black	Black %
236,132	2,518	1.1%	76,751	32.5%	92,318	39.1%	28,439	12.0%	38,624	16.4%
Total CVAP	Other CVAP	Other CVAP %	Latino CVAP	Latino CVAP %	Asian CVAP	Asian CVAP %	Black CVAP	Black CVAP %		
145,438	63,349	43.6%	40,374	27.8%	15,127	10.4%	26,588	18.3%		



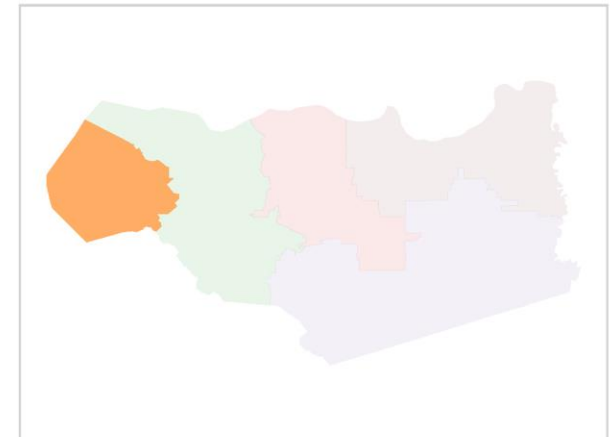
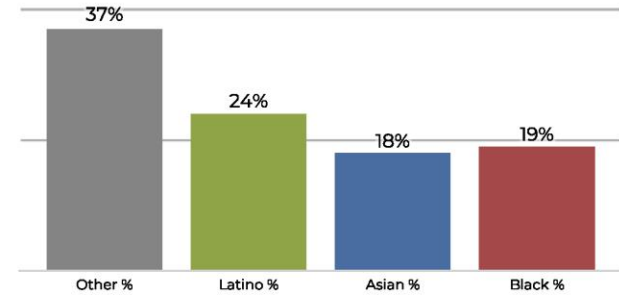
District 1



2020 Census

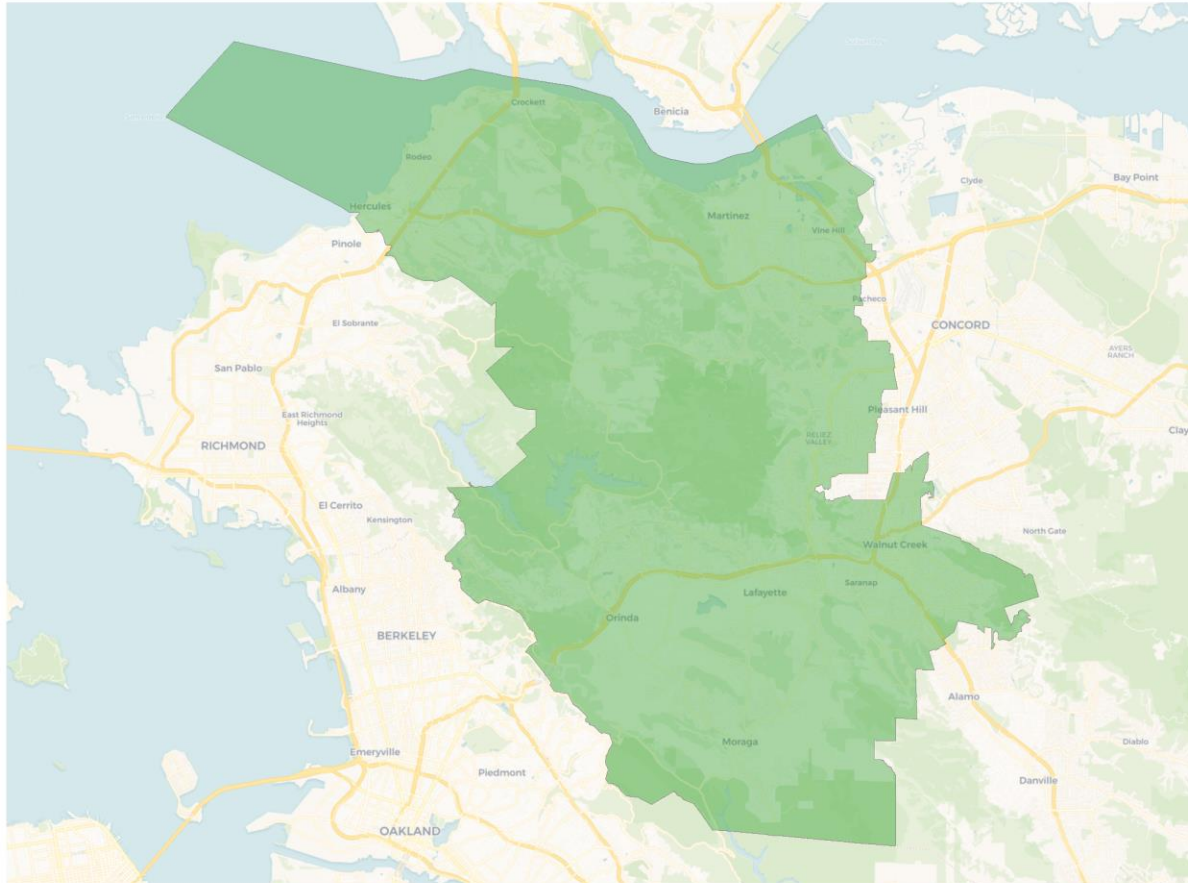


Citizen Voting Age Population

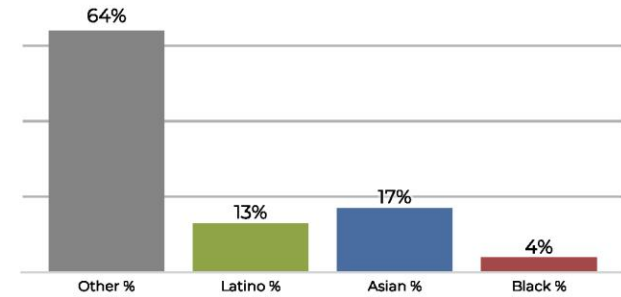


Population	Deviation	Deviation %	Other	Other %	Latino	Latino %	Asian	Asian %	Black	Black %
236,010	2,396	1.0%	66,940	28.4%	95,003	40.3%	40,760	17.3%	33,307	14.1%
Total CVAP	Other CVAP	Other CVAP %	Latino CVAP	Latino CVAP %	Asian CVAP	Asian CVAP %	Black CVAP	Black CVAP %		
140,908	52,449	37.2%	35,138	24.9%	26,038	18.5%	27,283	19.4%		

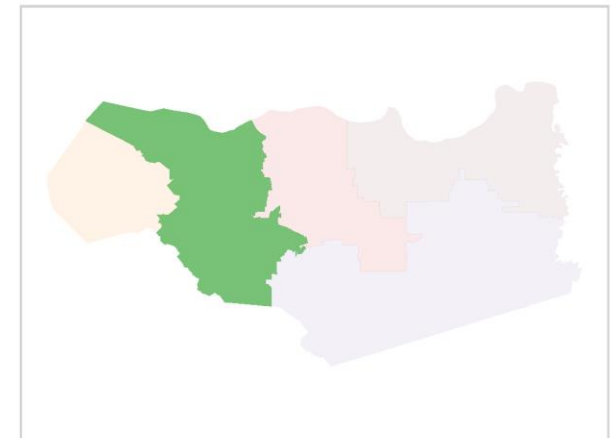
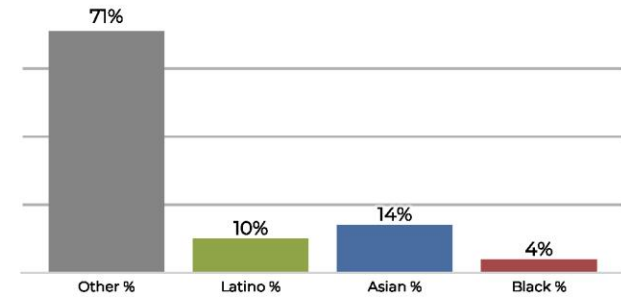
District 2



2020 Census

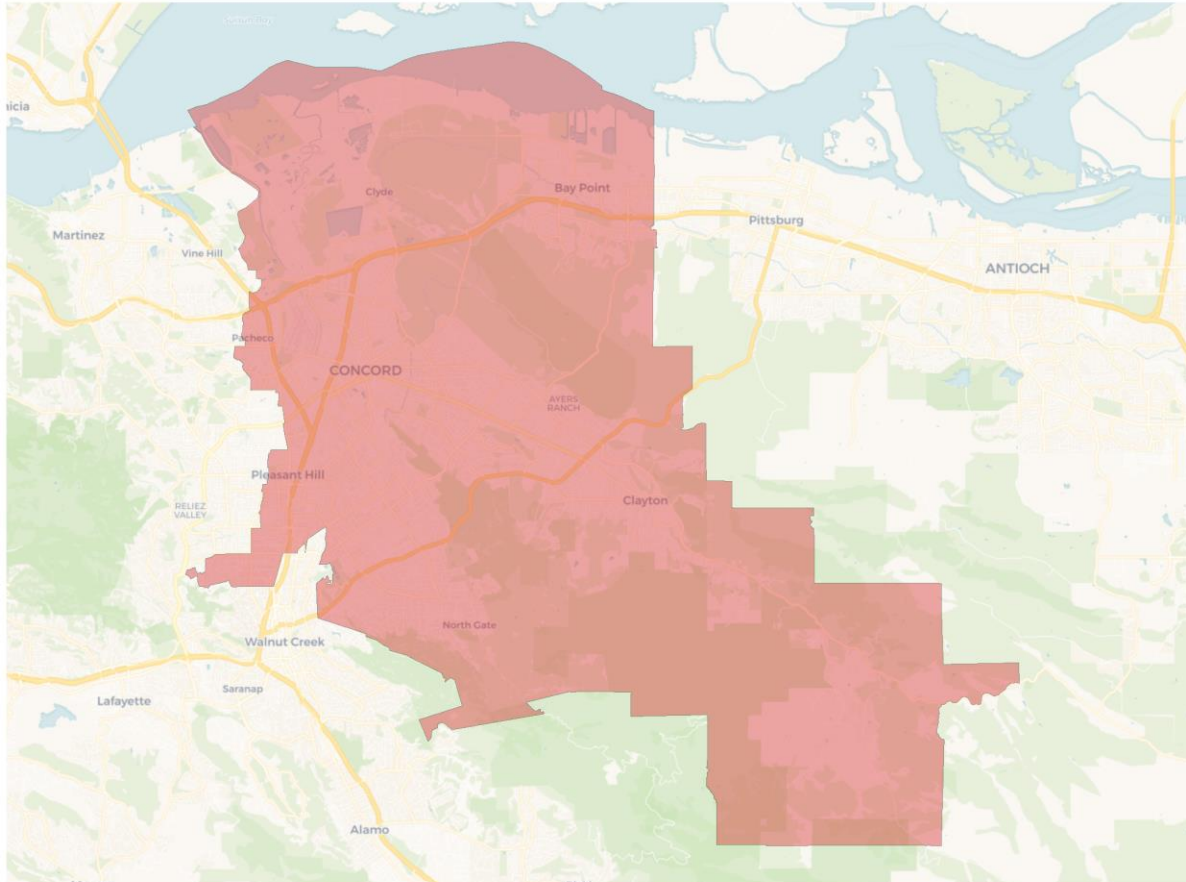


Citizen Voting Age Population

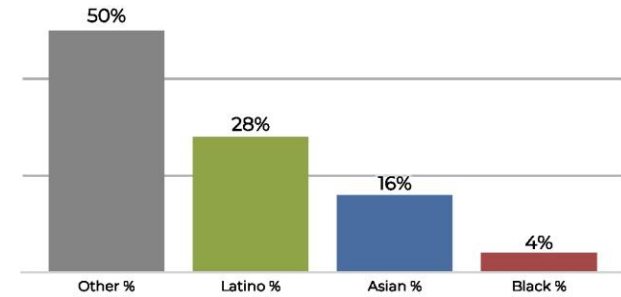


Population	Deviation	Deviation %	Other	Other %	Latino	Latino %	Asian	Asian %	Black	Black %
228,613	-5,001	-2.1%	148,271	64.9%	30,600	13.4%	40,174	17.6%	9,568	4.2%
Total CVAP	Other CVAP	Other CVAP %	Latino CVAP	Latino CVAP %	Asian CVAP	Asian CVAP %	Black CVAP	Black CVAP %		
170,609	121,629	71.3%	17,411	10.2%	24,455	14.3%	7,114	4.2%		

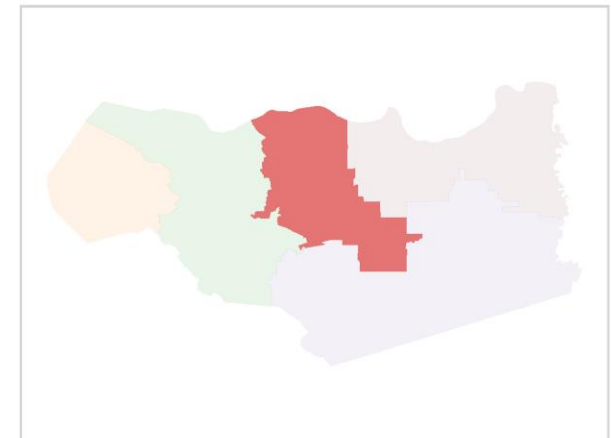
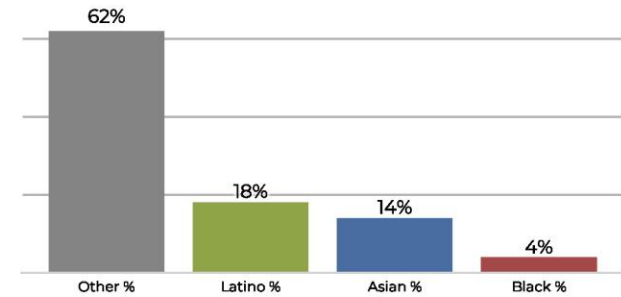
District 3



2020 Census

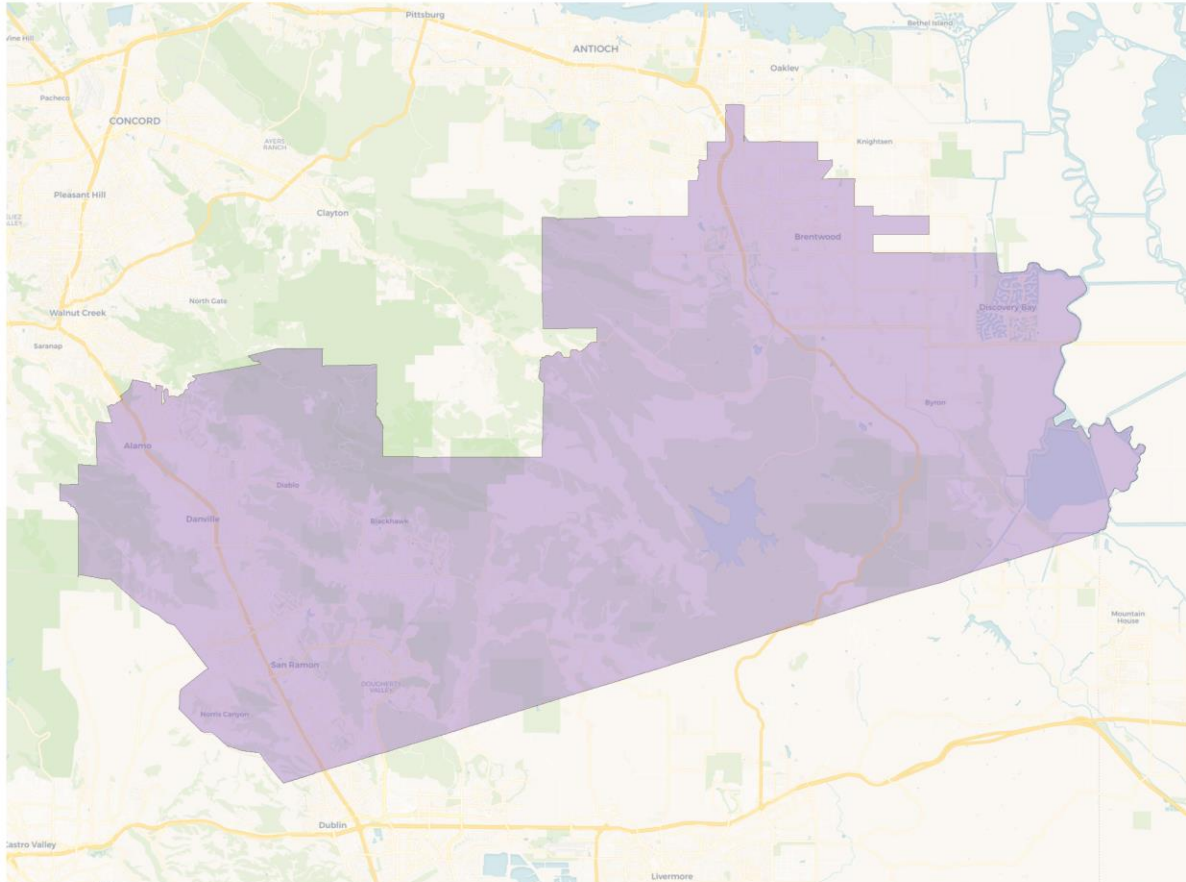


Citizen Voting Age Population

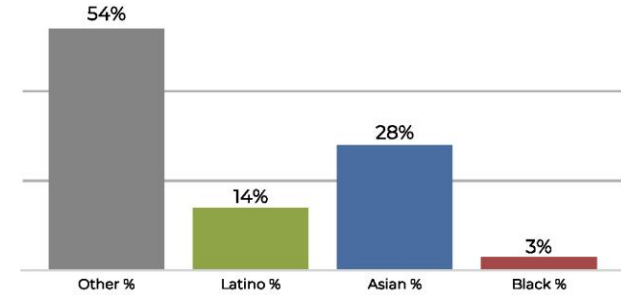


Population	Deviation	Deviation %	Other	Other %	Latino	Latino %	Asian	Asian %	Black	Black %
228,329	-5,285	-2.3%	115,707	50.7%	64,877	28.4%	37,761	16.5%	9,984	4.4%
Total CVAP	Other CVAP	Other CVAP %	Latino CVAP	Latino CVAP %	Asian CVAP	Asian CVAP %	Black CVAP	Black CVAP %		
154,243	96,739	62.7%	28,645	18.6%	21,680	14.1%	7,179	4.7%		

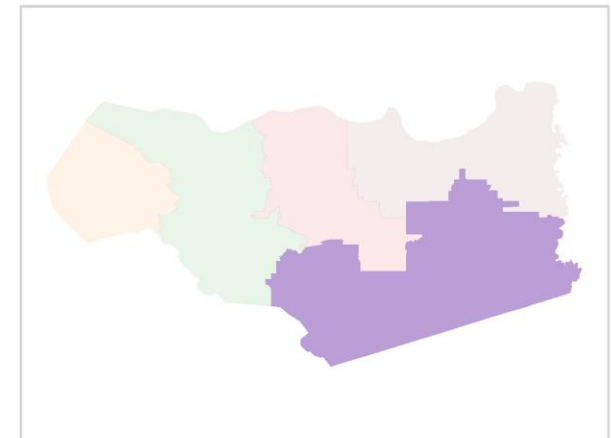
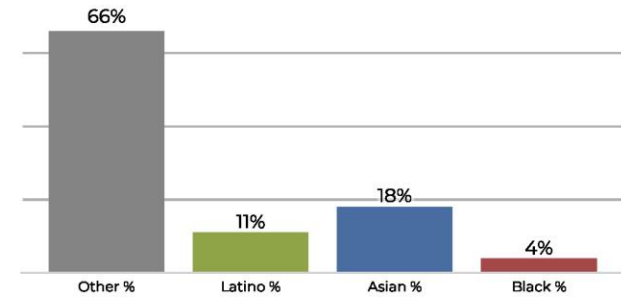
District 4



2020 Census

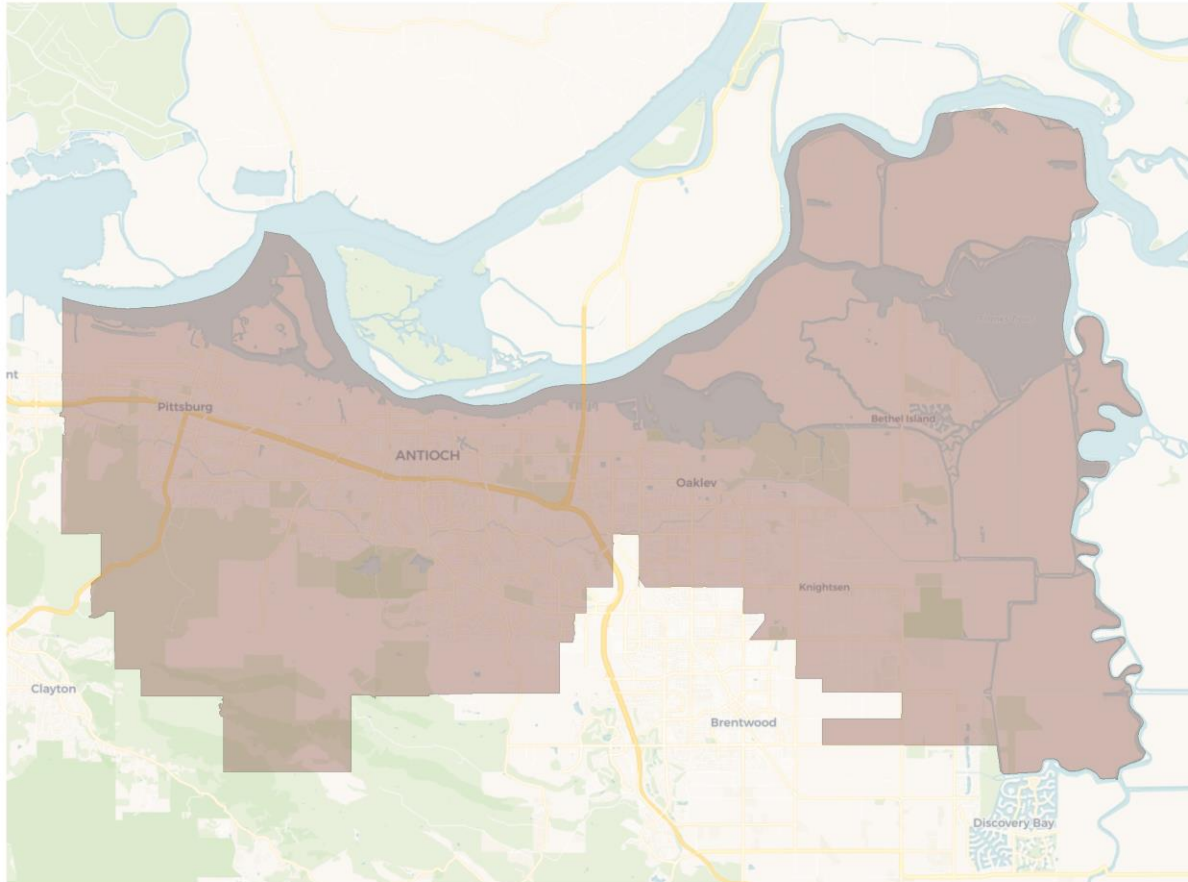


Citizen Voting Age Population

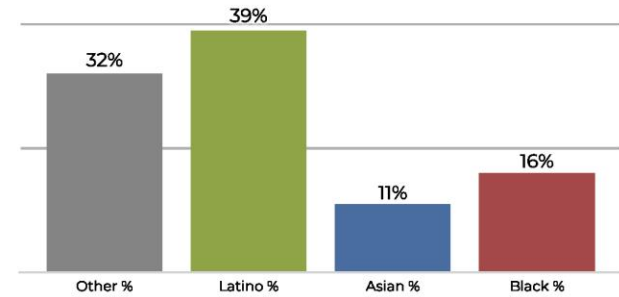


Population	Deviation	Deviation %	Other	Other %	Latino	Latino %	Asian	Asian %	Black	Black %
247,209	13,595	5.8%	134,317	54.3%	35,123	14.2%	69,155	28.0%	8,614	3.5%
Total CVAP	Other CVAP	Other CVAP %	Latino CVAP	Latino CVAP %	Asian CVAP	Asian CVAP %	Black CVAP	Black CVAP %		
156,882	103,884	66.2%	17,424	11.1%	29,292	18.7%	6,282	4.0%		

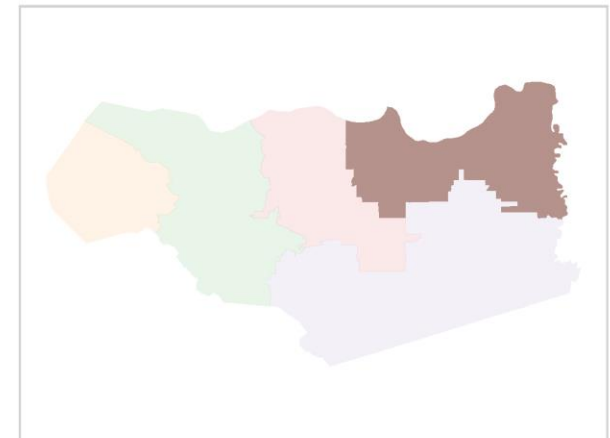
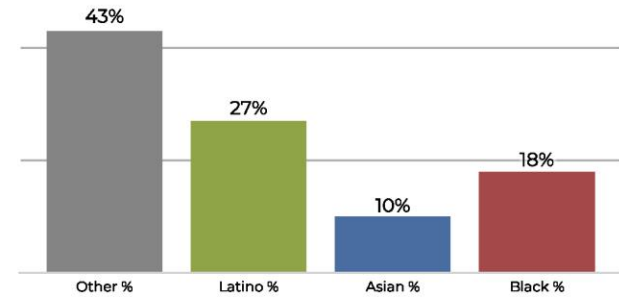
District 5



2020 Census



Citizen Voting Age Population



Population	Deviation	Deviation %	Other	Other %	Latino	Latino %	Asian	Asian %	Black	Black %
227,908	-5,706	-2.4%	73,862	32.4%	89,822	39.4%	26,698	11.7%	37,526	16.5%
Total CVAP	Other CVAP	Other CVAP %	Latino CVAP	Latino CVAP %	Asian CVAP	Asian CVAP %	Black CVAP	Black CVAP %		
140,302	61,244	43.7%	39,098	27.9%	14,134	10.1%	25,826	18.4%		