

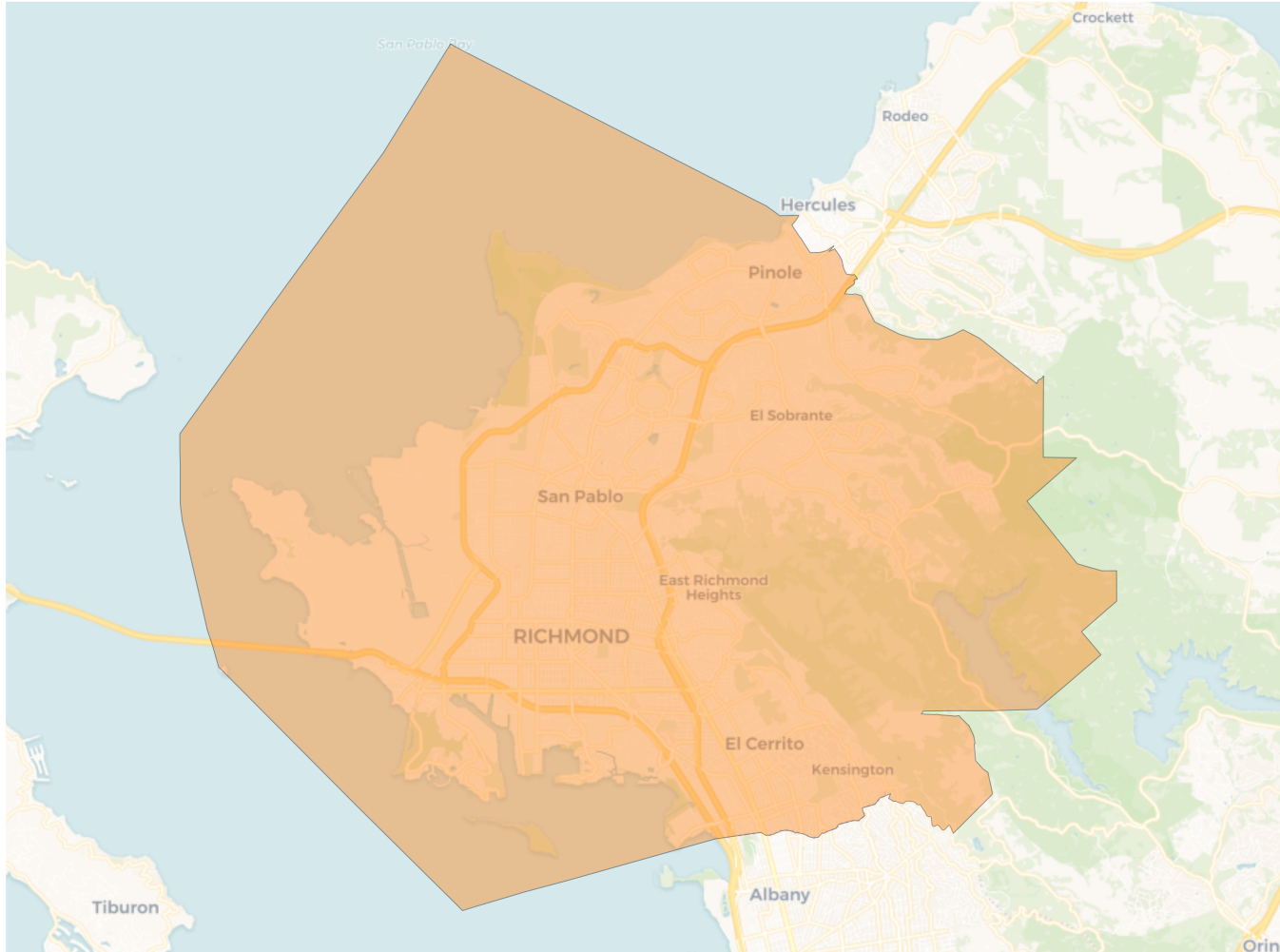
2020 Census

	A	B	C	D	E
Population	236,010	226,779	228,492	228,728	248,060
Deviation	2,396	-6,835	-5,122	-4,886	14,446
Deviation %	1.0%	-2.9%	-2.2%	-2.1%	6.2%
Other	66,940	91,322	143,275	131,106	106,454
Other %	28.4%	40.3%	62.7%	57.3%	42.9%
Latino	95,003	70,471	45,337	23,390	81,224
Latino %	40.3%	31.1%	19.8%	10.2%	32.7%
Asian	40,760	42,085	33,979	69,648	28,076
Asian %	17.3%	18.6%	14.9%	30.5%	11.3%
Black	33,307	22,901	5,901	4,584	32,306
Black %	14.1%	10.1%	2.6%	2.0%	13.0%

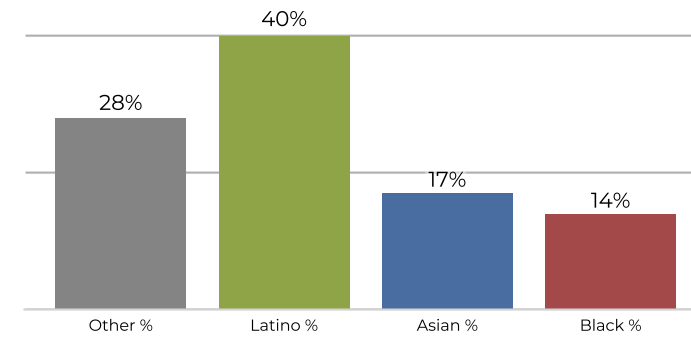
Citizen Voting Age Population (CVAP)

	A	B	C	D	E
Total CVAP	140,908	150,061	160,868	149,138	161,969
Other CVAP	52,449	75,947	116,494	104,692	86,363
Other CVAP %	37.2%	50.6%	72.4%	70.2%	53.3%
Latino CVAP	35,138	32,854	20,113	11,974	37,637
Latino CVAP %	24.9%	21.9%	12.5%	8.0%	23.2%
Asian CVAP	26,038	25,004	19,812	29,588	15,157
Asian CVAP %	18.5%	16.7%	12.3%	19.8%	9.4%
Black CVAP	27,283	16,256	4,449	2,884	22,812
Black CVAP %	19.4%	10.8%	2.8%	1.9%	14.1%

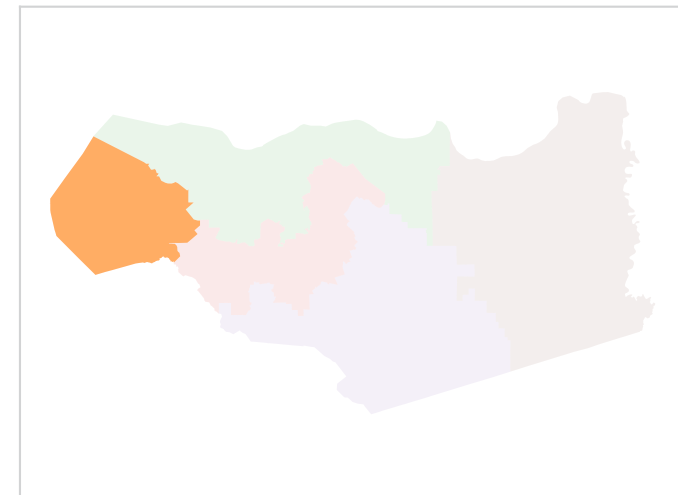
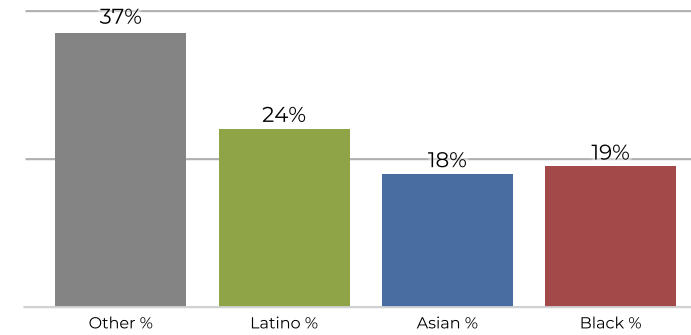
District A



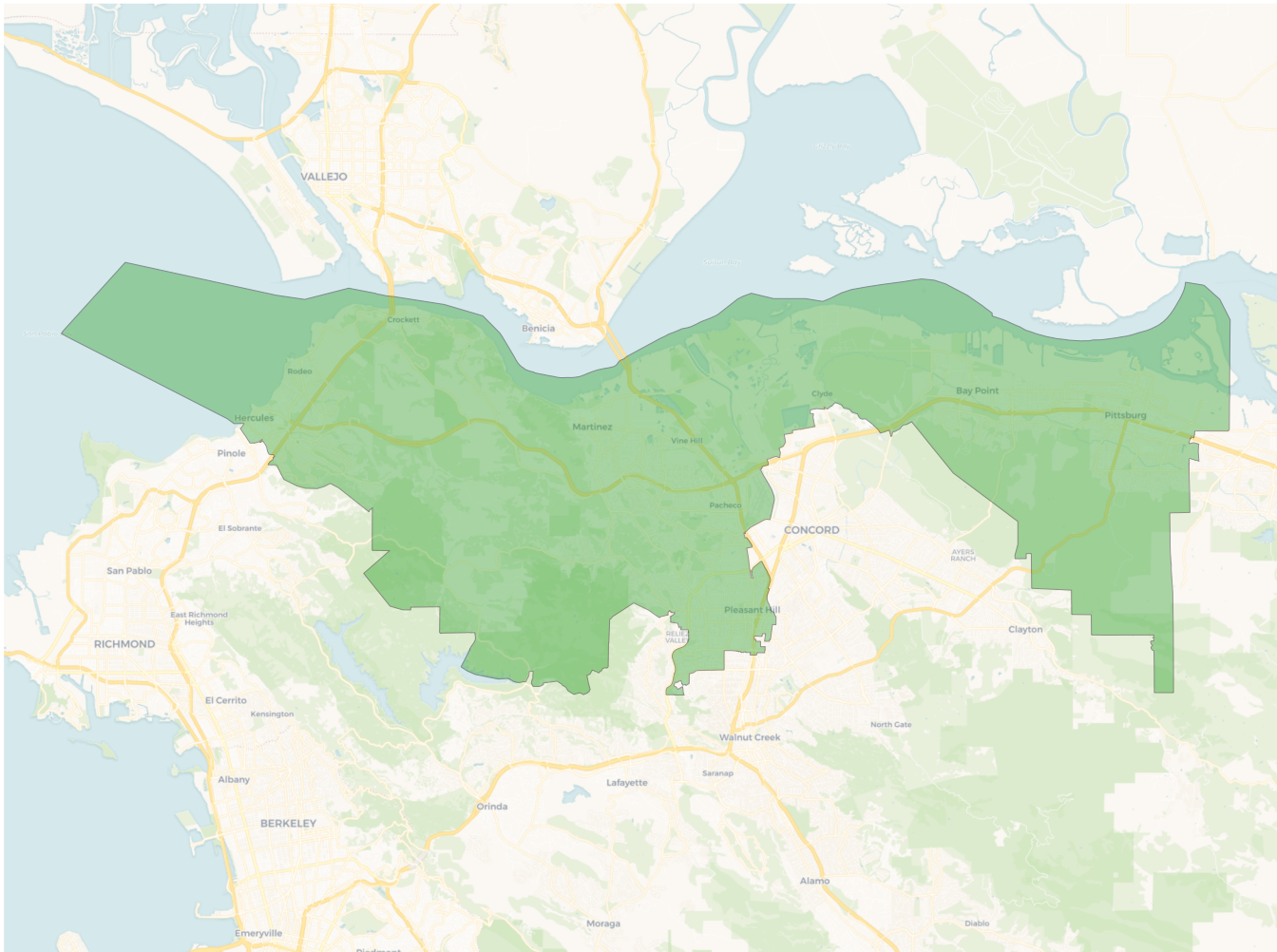
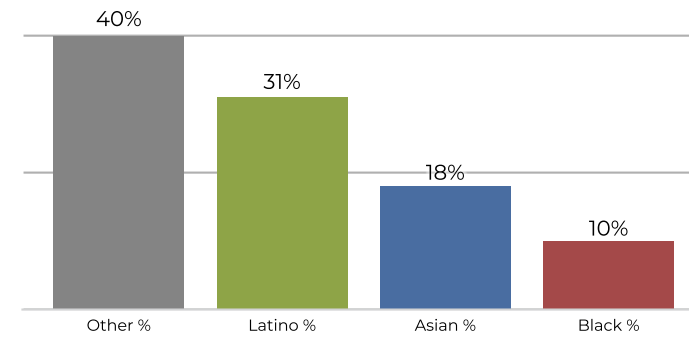
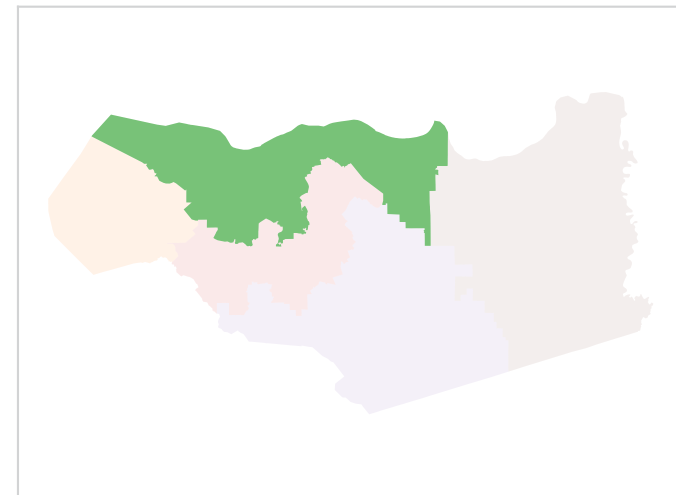
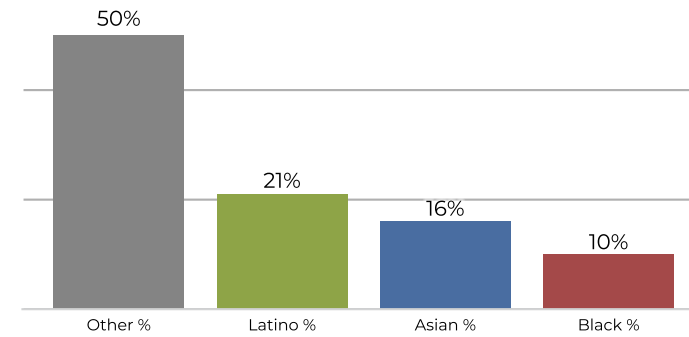
2020 Census



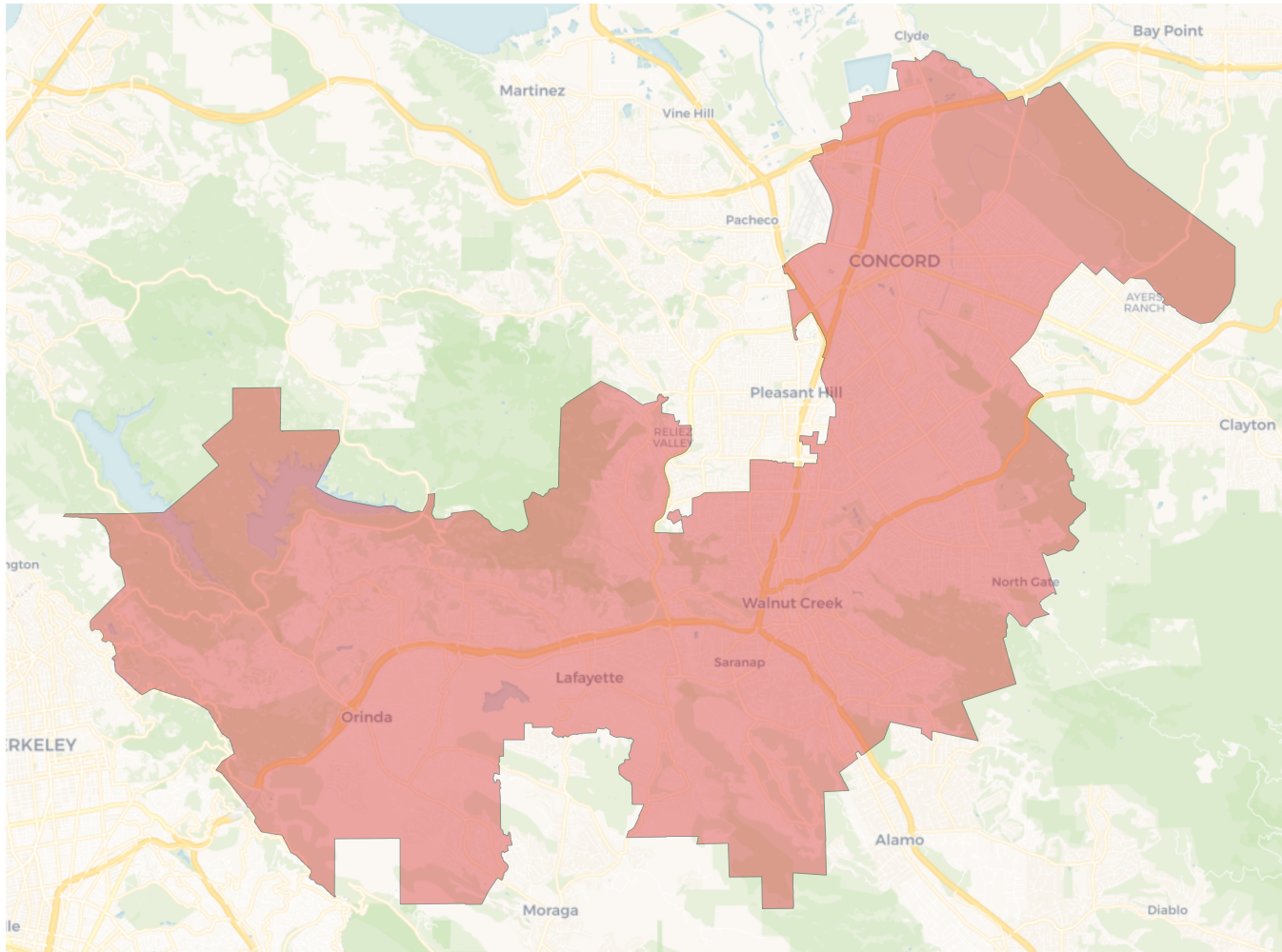
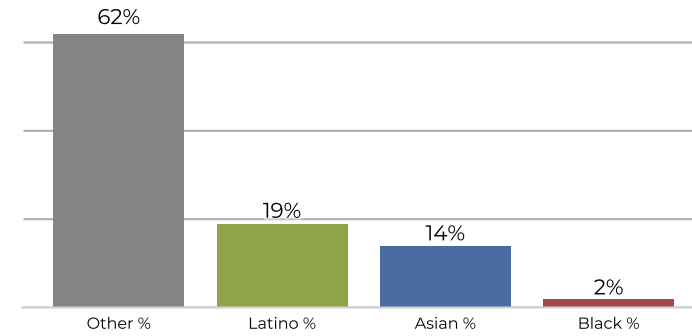
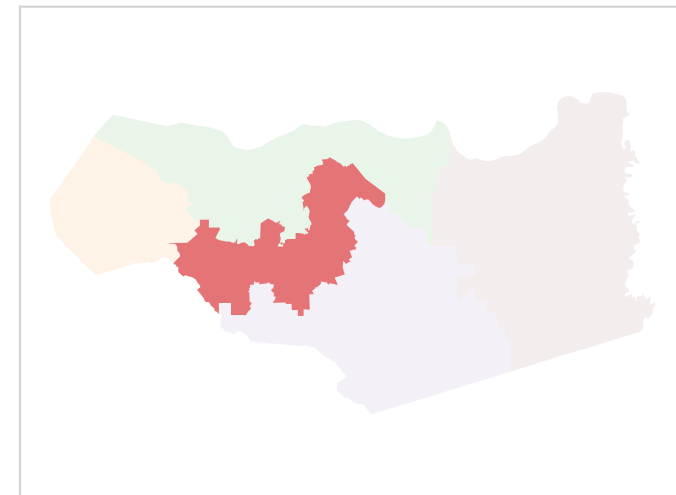
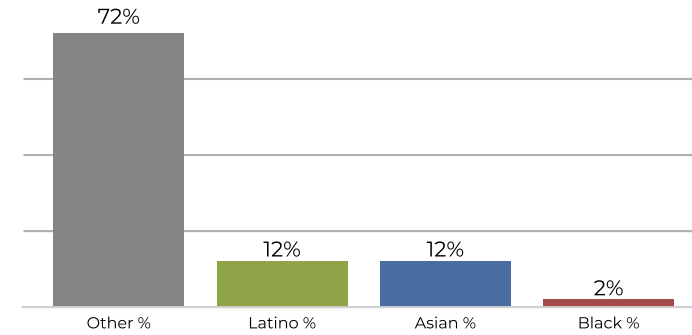
Citizen Voting Age Population



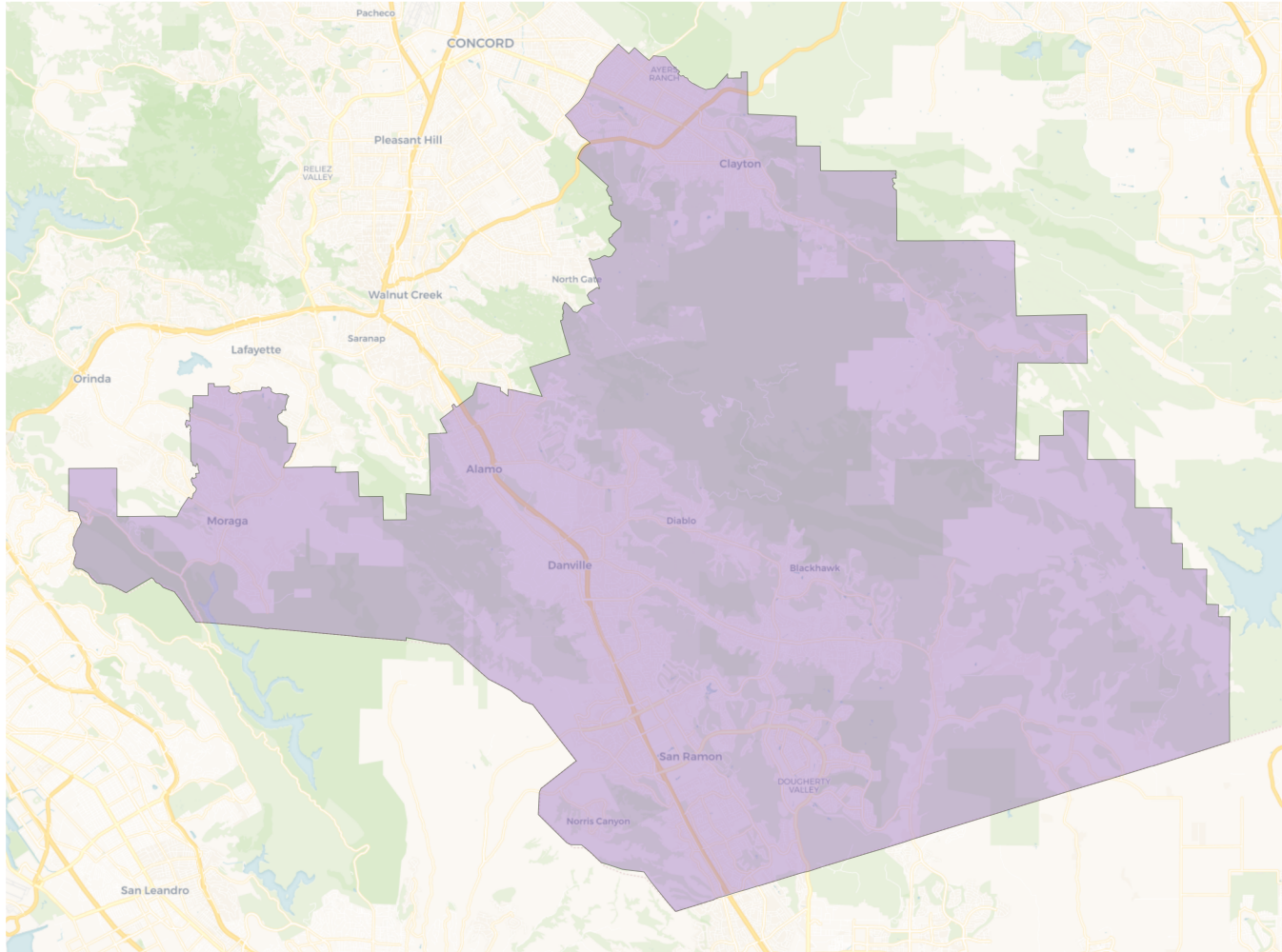
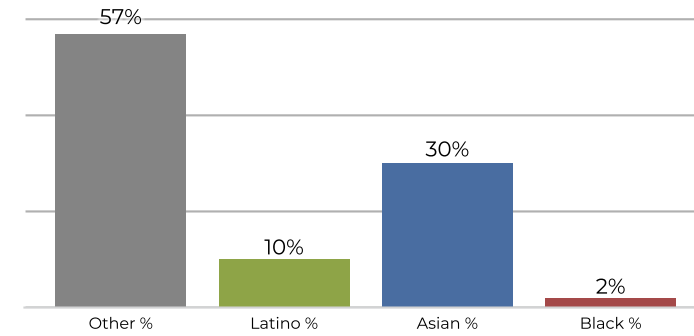
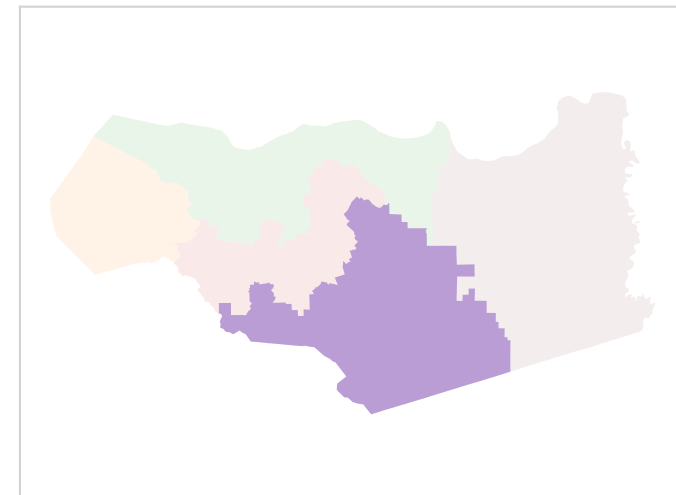
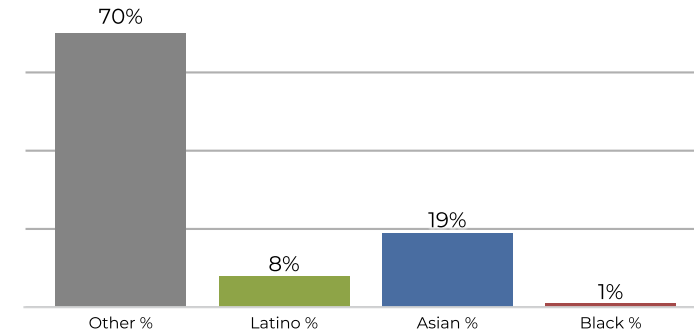
Population	Deviation	Deviation %	Other	Other %	Latino	Latino %	Asian	Asian %	Black	Black %
236,010	2,396	1.0%	66,940	28.4%	95,003	40.3%	40,760	17.3%	33,307	14.1%
Total CVAP	Other CVAP	Other CVAP %	Latino CVAP	Latino CVAP %	Asian CVAP	Asian CVAP %	Black CVAP	Black CVAP %		
140,908	52,449	37.2%	35,138	24.9%	26,038	18.5%	27,283	19.4%		

District B

2020 Census

Citizen Voting Age Population


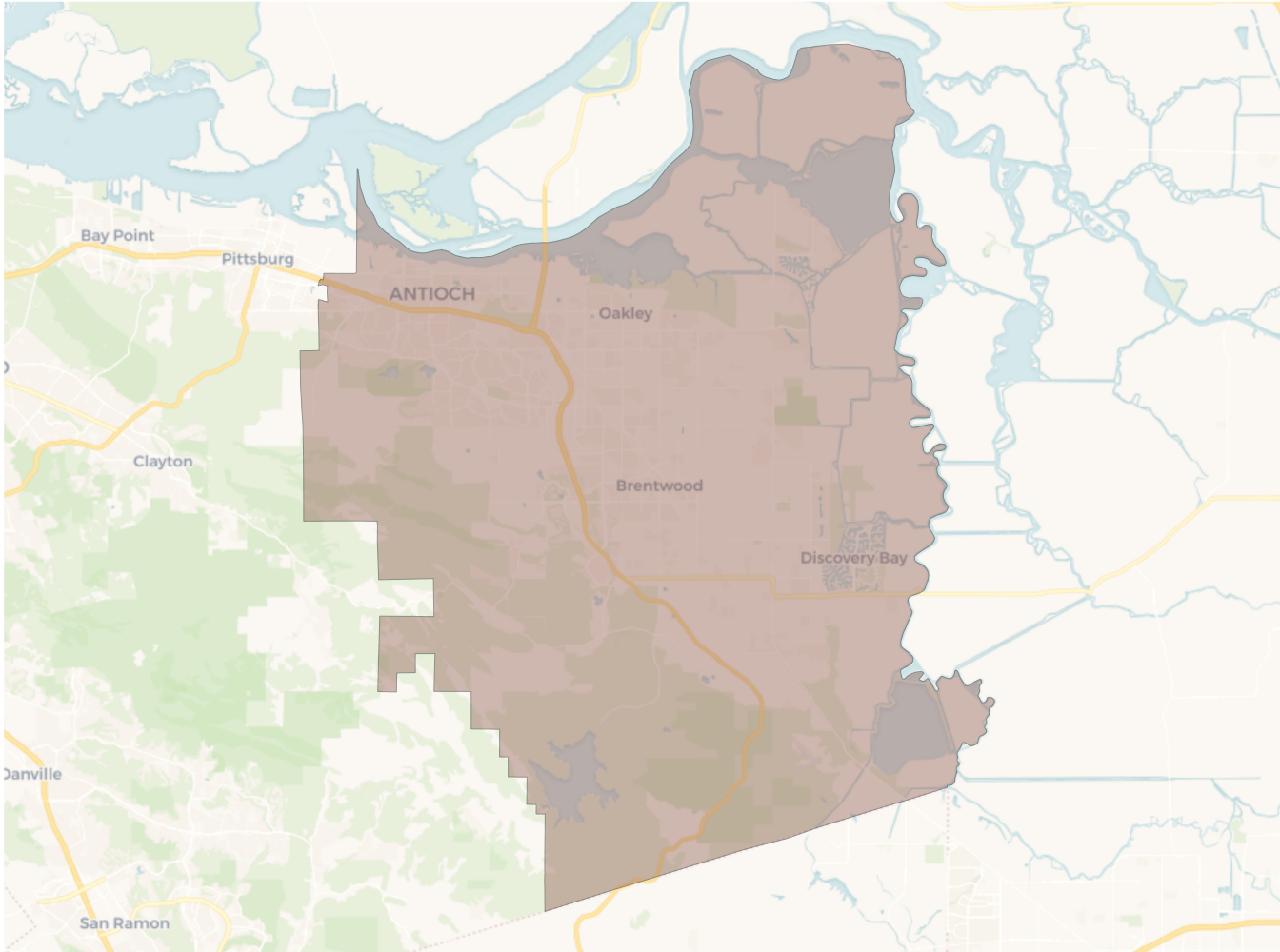
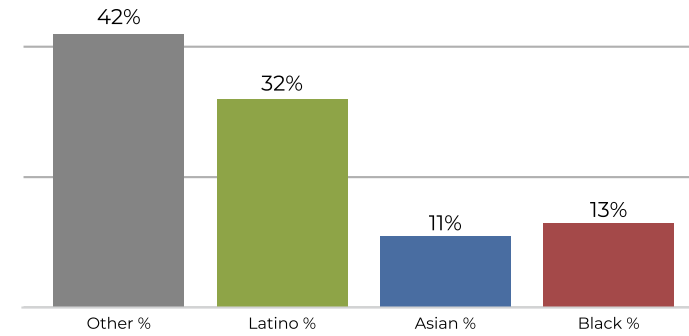
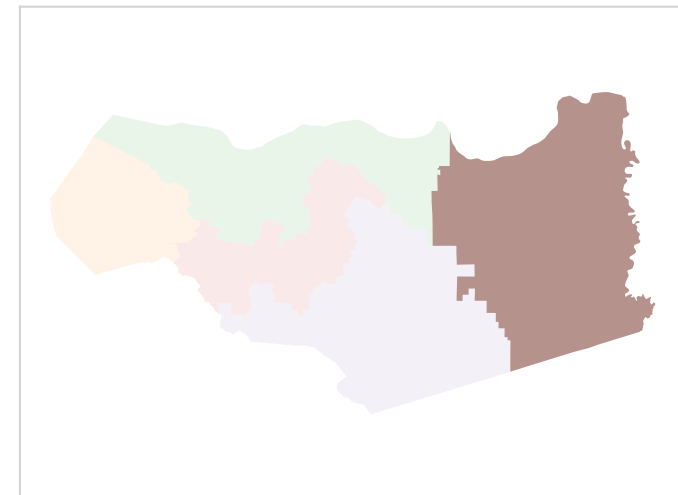
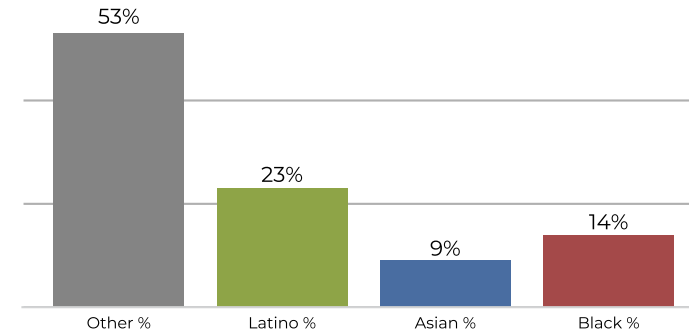
Population	Deviation	Deviation %	Other	Other %	Latino	Latino %	Asian	Asian %	Black	Black %
226,779	-6,835	-2.9%	91,322	40.3%	70,471	31.1%	42,085	18.6%	22,901	10.1%
Total CVAP	Other CVAP	Other CVAP %	Latino CVAP	Latino CVAP %	Asian CVAP	Asian CVAP %	Black CVAP	Black CVAP %		
150,061	75,947	50.6%	32,854	21.9%	25,004	16.7%	16,256	10.8%		

District C

2020 Census

Citizen Voting Age Population


Population	Deviation	Deviation %	Other	Other %	Latino	Latino %	Asian	Asian %	Black	Black %
228,492	-5,122	-2.2%	143,275	62.7%	45,337	19.8%	33,979	14.9%	5,901	2.6%
Total CVAP	Other CVAP	Other CVAP %	Latino CVAP	Latino CVAP %	Asian CVAP	Asian CVAP %	Black CVAP	Black CVAP %		
160,868	116,494	72.4%	20,113	12.5%	19,812	12.3%	4,449	2.8%		

District D

2020 Census

Citizen Voting Age Population


Population	Deviation	Deviation %	Other	Other %	Latino	Latino %	Asian	Asian %	Black	Black %
228,728	-4,886	-2.1%	131,106	57.3%	23,390	10.2%	69,648	30.5%	4,584	2.0%
Total CVAP	Other CVAP	Other CVAP %	Latino CVAP	Latino CVAP %	Asian CVAP	Asian CVAP %	Black CVAP	Black CVAP %		
149,138	104,692	70.2%	11,974	8.0%	29,588	19.8%	2,884	1.9%		

District E

2020 Census

Citizen Voting Age Population


Population	Deviation	Deviation %	Other	Other %	Latino	Latino %	Asian	Asian %	Black	Black %
248,060	14,446	6.2%	106,454	42.9%	81,224	32.7%	28,076	11.3%	32,306	13.0%
Total CVAP	Other CVAP	Other CVAP %	Latino CVAP	Latino CVAP %	Asian CVAP	Asian CVAP %	Black CVAP	Black CVAP %		
161,969	86,363	53.3%	37,637	23.2%	15,157	9.4%	22,812	14.1%		